

Construction: organising a safe and healthy construction site

The CDM-C viewpoint

James Woolgrove

07999 7666 36

JAMES WOOLGROVE
associates 

ASSOCIATES
JAMES WOOLGROVE 

What we are going to cover

- Looking at the CDM 2007 Regulations
- Construction Phase Planning
- Welfare
- Back to Basics
- Site Set up

JAMES WOOLGROVE
associates 

ASSOCIATES
JAMES WOOLGROVE 

Paragraph two of the ACOP

The key aim of CDM2007 is to integrate health and safety into the management of the project and to encourage everyone involved to work together to:

- (a) improve the planning and management of projects from the very start;
- (b) identify hazards early on, so they can be eliminated or reduced at the design or planning stage and the remaining risks can be properly managed;
- (c) target effort where it can do the most good in terms of health and safety; and
- (d) discourage unnecessary bureaucracy.

Paragraph four of the ACOP

The effort devoted to planning and managing health and safety should be in proportion to the risks and complexity associated with the project. When deciding what you need to do to comply with these Regulations, your focus should always be on action necessary to reduce and manage risks. Any paperwork produced should help with communication and risk management. Paperwork which adds little to the management of risk is a waste of effort, and can be a dangerous distraction from the real business of risk reduction and management.

What do the words mean to you?

Safety

Health

Environment

Quality

Plan

Are we any good at them?

JAMES WOOLGROVE
associates 

ASSOCIATES
JAMES WOOLGROVE 

Construction Phase Health and Safety Plan

- Let's do what it says on the tin!
- Make a document that is useful on site



JAMES WOOLGROVE
associates 

ASSOCIATES
JAMES WOOLGROVE 

What are we looking after?

Health Issues

- Carcinogens
- Irritants to skin
- Vibration
- Noise
- Risks to lungs
- Muscles, bones & joints
- Food & drink
- Toilets

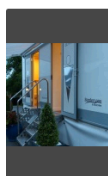
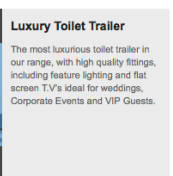


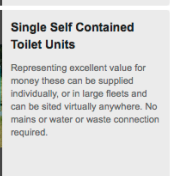
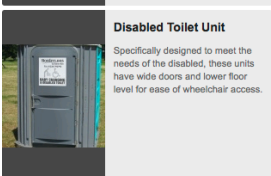

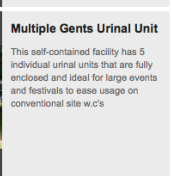
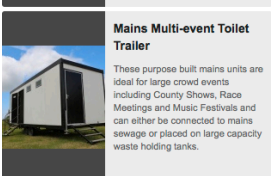
Safety Issues

- Slips & trips
- Falls from height
- Falling objects
- Being struck by machinery
- Cuts

JAMES WOOLGROVE
associates 

ASSOCIATES
JAMES WOOLGROVE 

Welfare

 <p>Luxury Toilet Trailer</p> <p>The most luxurious toilet trailer in our range, with high quality fittings, including feature lighting and flat screen TV's ideal for weddings, Corporate Events and VIP Guests.</p>	 <p>Premier Toilet Trailer</p> <p>Stylish and contemporary, our Premier Toilet Trailers are available in three sizes so you can match the specification in line with usage numbers.</p>	 <p>De-Luxe Toilet Trailer</p> <p>These re-circulating units are ideally suited to large shows and events and can be easily converted for single sex usage if required. No waste or water connections are required.</p>
 <p>Single Self Contained Toilet Units</p> <p>Representing excellent value for money these can be supplied individually, or in large fleets and can be sited virtually anywhere. No mains or water or waste connection required.</p>	 <p>Disabled Toilet Unit</p> <p>Specifically designed to meet the needs of the disabled, these units have wide doors and lower floor level for ease of wheelchair access.</p>	 <p>Disabled Toilet Unit with Baby Change Facilities</p> <p>By simply incorporating a baby-changing shelf into a disabled unit, this will provide enhanced facilities for your event that will be appreciated by those requiring ease of access and more space for parents with small children.</p>
 <p>Multiple Gents Urinal Unit</p> <p>This self-contained facility has 5 individual urinal units that are fully enclosed and ideal for large events and festivals to ease usage on conventional site w.c's</p>	 <p>Mains Multi-event Toilet Trailer</p> <p>These purpose built mains units are ideal for large crowd events including County Shows, Race Meetings and Music Festivals and can either be connected to mains sewage or placed on large capacity waste holding tanks.</p>	 <p>BorderLoos at Your Service</p> <p>BorderLoos offer the full range of care and support services to assist you with your event</p>

ASSOCIATES
JAMES WOOLGROVE 

Principles of Protection

- Eliminate
- Reduce
- Protect
- PPE is the last resort -
Why is it always the first item on the list?



JAMES WOOLGROVE
associates 

ASSOCIATES
JAMES WOOLGROVE 

Site Plan

- Vehicles and pedestrians
- Storage of new and waste materials
- Control of the site / visitors
- Fuel
- Entry and exit
- Emergency vehicle access
- Temporary power
- Remote locations
- Neighbours

JAMES WOOLGROVE 
associates

ASSOCIATES
JAMES WOOLGROVE 

The Principal Contractor's View Over to you, Sam

JAMES WOOLGROVE
associates 

JAMES WOOLGROVE
associates 

ORGANISING A SAFE AND HEALTHY CONSTRUCTION SITE

Sam Duxbury
SHE Manager
Walter Carefoot & Sons (Construction) Ltd

CAREFOOT PLC

CDM Regulations 2007

Managing Health and Safety in
Construction

ACOP

L144

Tell you all you need to know about
the regulations.

CAREFOOT PLC

Getting Started

Creating a safe and healthy
construction site is very much like
constructing the building.

You need some good foundations
and quality workmanship.

CAREFOOT PLC

Ingredients

- Documentation
- Systems & Procedures
- Site set up and establishment
- Logistics
- Segregating the site
- Protecting the public
- Accommodation and welfare
- Emergency procedures
- Good Co-operation

CAREFOOT PLC

Documentation

Pre Construction Information

- Should provide information to allow the work to be planned and managed in a safe and workmanlike manner

THE RIGHT INFORMATION FOR THE
RIGHT PEOPLE AT THE RIGHT TIME

CAREFOOT PLC

Documentation

Construction Phase Plan

- Should identify the risks to health and safety arising from the construction work (including the risks specific to the particular type of construction work concerned) and include suitable and sufficient measures to address such risks, including any site rules.

CAREFOOT PLC

Documentation

- Company documents
 - Business Processes and Procedures Manual
 - Safety Documentation
 - Asbestos
 - HAV
 - Face Fit Testing

CAREFOOT PLC

Construction phase plan

- Planning
- Managing
- Well set out easy to understand
- Prevention
- Working together
- Specific
- Updated / Amended

CAREFOOT PLC

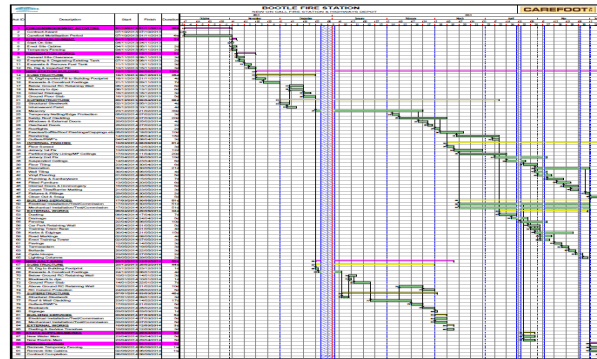
Procurement Process

- Contracts Managers and Site Managers and Quantity Surveyors sit down with all contractors and go through the works package and all our procedures that will apply on the project.

CAREFOOT PLC

Program

- Vital for any project regardless of size



CAREFOOT PLC

Site Set Up & Establishment

- Visit Site
 - Tender Stage
 - Check Pre Construction Info
 - Communications
 - Local environment
 - Use Google Maps
 - Car Parking
 - Material Deliveries
 - Best Route

CAREFOOT PLC

Site Set Up & Establishment

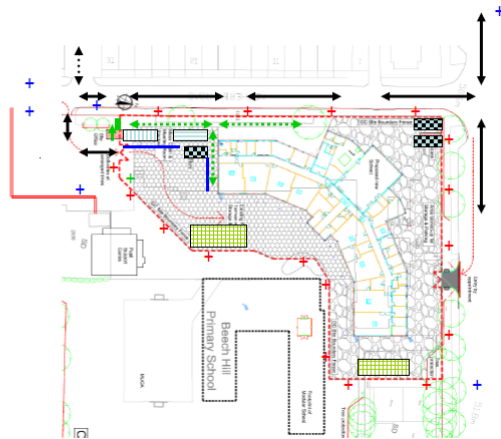
- Neighbours
- Prospective client
- Shops
- Schools
- Bus Stops
- Train Stations
- Refuse Collection
- Time of Day

CAREFOOT PLC

Site Set Up & Establishment

Beech Hill Primary School
Site Set Up and Establishment Drawings

- ↔ Vehicle access route to site
- ◀-▶ Delivery Vehicle emergency refuge & Turning area
- - - Site Fencing & Boundary
- Pedestrian route – Pupil support centre
- ↑ ↓ Pedestrian access route to site
- ↔ Pedestrian route on site
- Pedestrian / vehicle segregation
- ▤ Site Office
- ▥ Canteen / drying room and meeting room stacked
- ▧ Storage containers
- ▨ Storage areas
- + Fire assembly point
- + Construction site warning signs
- + Various site information signs



CAREFOOT PLC

Site Set Up & Establishment

**Beech Hill Primary School
Temporary Footpath Details**

The temporary footpath is to be created minimum 1 metre wide within an existing parking lane situated off the main highway

The temporary footpath will be approx 6 metres long 1 metre wide and tapered back to the existing footpath

The footpath will be created using pedestrian barrier in accordance with the Code of Practice - Safety at Street Works and Road Works

Signage notifying pedestrians and motorists will be positioned on the highway and footpath in advance of the work etc in accordance with the Code of Practice - Safety at Street Works and Road Works

Where the temp footpath crosses the grass verge then the ground will be removed and replaced with stone and topped with tarmac to an acceptable finished surface along with a tactile surfaces

Ramps will be incorporated to assist wheelchair users both off and onto the kerb, these ramps will be at least 1 metre wide and in accordance with the Code of Practice - Safety at Street Works and Road Works

The works to the crossover will be secured by a 2 metre high anti climb fence which will be double clipped and checked daily throughout the work

Access to the work area will be from the site

The temporary signage will include an information board in accordance with the Code of Practice - Safety at Street Works and Road Works

IT IS THE RESPONSIBILITY OF THE STREET WORKS SUPERVISOR TO ENSURE THAT THE WORKS COMPLIES TO THE Code of Practice - Safety at Street Works and Road Works

Site Induction

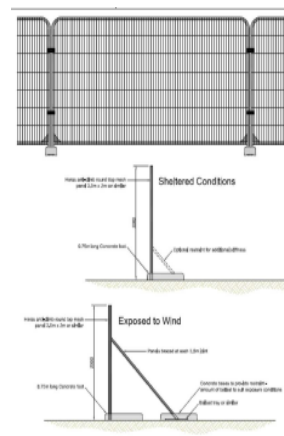
- Sets the Ground Rules
- Time
- Location
- Specific
- Introduction to the Project
- Expectations
- Duration

Site Fencing / Hoarding

- This is Temporary Works
- Suitable to prevent unauthorised access, especially children
- Maintained
- Create a good impression
- Have separate access for pedestrians and vehicles

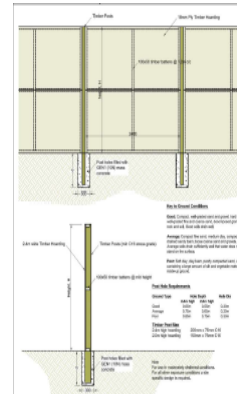
CAREFOOT PLC

Protecting the Public



CAREFOOT PLC

Protecting the Public



CAREFOOT PLC

Traffic Management / Segregation

- Can Change from day to day
- Keep Pedestrians and Vehicles Apart
- Off site parking
- Material deliveries
- Storage areas
- One way systems
- Turning areas
- Work areas
- Emergency access

CAREFOOT PLC

Traffic Management / Segregation



CAREFOOT PLC

Traffic Management / Segregation

- Banksman
 - Prevents access, not responsible for the supervision of vehicle manoeuvres

CAREFOOT PLC

Traffic Management / Segregation



CAREFOOT PLC

Site Tidiness

- Just in Time Deliveries
- Designated Storage Areas
- Waste Materials
- Over ordering / Temporary Depot
- Cleaning regime
- Suitable and sufficient bins
- Skips emptied on regular basis

CAREFOOT PLC

Site Tidiness

- Keep it Clean it Sets the Scene
- Storage and Walkways



CAREFOOT PLC

Site Tidiness

- Keep it Clean it Sets the Scene
- Clear work areas and walkways



CAREFOOT PLC

Site Tidiness

- Keep it Clean it Sets the Scene
- Waste segregation (Environment)



CAREFOOT PLC

Site Tidiness

- Creating the wrong impression



CAREFOOT PLC

Site Tidiness

- Creating the wrong impression



CAREFOOT PLC

Site Tidiness

- Creating the wrong impression



CAREFOOT PLC

Welfare Arrangements

- Covered in CDM Regs

Unacceptable



Good example



CAREFOOT PLC

Welfare Arrangements

- Covered in CDM Regs

Unacceptable



Good example



CAREFOOT PLC

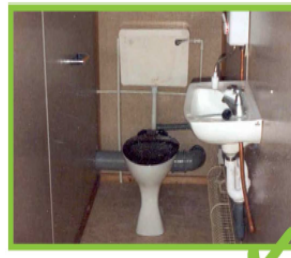
Welfare Arrangements

- Covered in CDM Regs

Unacceptable



Good example



CAREFOOT PLC

Emergency Procedures



CAREFOOT PLC

Summary

- Planning is key to having a successful site
- Work as a team
- Set your expectations early
- Work with your contractors
- Monitor
- Improve

CAREFOOT PLC

Organising a Safe and Healthy Construction Site

QUESTIONS

sam.duxbury@carefootplc.com

CAREFOOT PLC