

MINERAL
COMPOSITE
CAREA®

MINERAL
COMPOSITE
CAREA®

CAREA®
ZA de bel air - 49 520 Combrée - France
T + 33 (0)1 69 35 53 63
mail: contact.facade@carea.fr
www.carea-facade.fr
www.carea.uk.com



RAINSCREEN CLADDING
& THERMALLY INSULATED CLADDING SYSTEMS

INTERLOCKING PANELS

GROOVED CLADDING

MADE IN FRANCE



ANTICIPATION
AS SECOND
NATURE

MINERAL
COMPOSITE
CAREA[®]

EDITORIAL

Changing standards, changing expectations, regulations that impose new requirements....

The building and construction industry is constantly changing. A moving world that forces us to reinvent ourselves to meet new needs and to keep ahead of the pack.

For us, this necessary anticipation has become second nature.... Since our creation 35 years ago, we have made innovation a daily commitment.

It is this capacity to imagine tomorrow that has made CAREA® a leader with unanimously recognised know-how.

We have never stopped developing our expertise to create a highly technical product range using a naturally ecological mineral.

Today CAREA® can offer eco-virtuous solutions using exclusive composite materials.

We are proud of our know-how and assert it. Of course, we continue to feed it and develop it to become an increasingly unavoidable actor...

An actor that counts and, stimulated by your trust, shows the way.

We believe that the future is designed today!

Thierry Leverrier
CEO of CAREA® Group



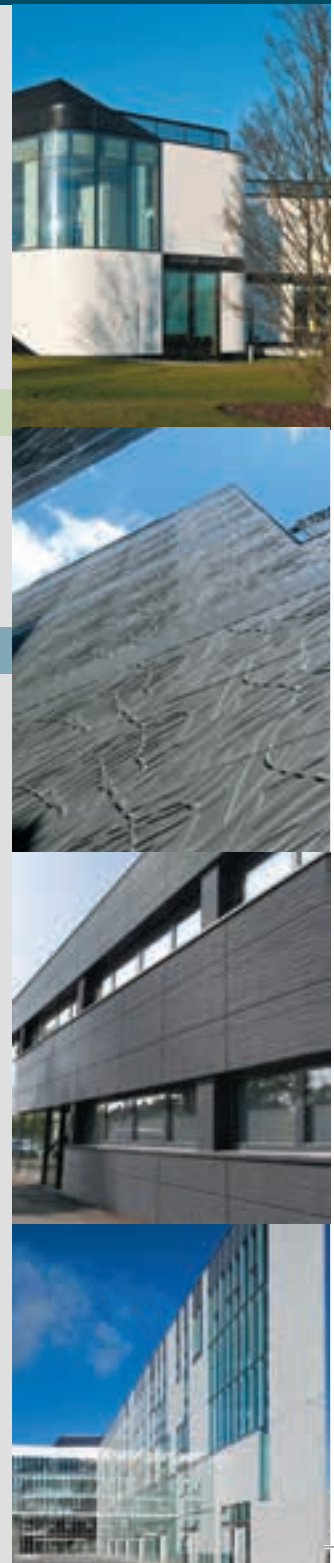
CONTENTS

8-9	THE GROUP
10-11	CAREA® MATERIALS
12-13	OUR COMMITMENT SUSTAINABLE DEVELOPMENT

14-15	UNIQUE EXPERTISE MULTIPLE ACTIVITIES
16-17	FROM MATERIALS TO MARKETING

CAREA® SYSTEMS

CAREA® FACADE	18-19
EXTERNAL THERMAL INSULATION	20-21
OUR RANGES	22-23
CAREA® INTERLOCKING PANELS	25-37
Systems	26-27
ALPHA	28-29
AQUILA	32-35
The colour range.....	34-37
CAREA® GROOVED PANELS	39-57
Systems	40-41
Grooved panels	
ARDAL	42-45
ACANTHA	46-49
ARMADA	50-53
Undercut panels	
ARTEMA	54-55
The colour range	56-59
ADDITIONAL PRODUCTS	
HOB: Window pod systems	60-61
CAREA® PRIMALU Backing structures	62-63
CAREA® SERVICES	
CAREA® TECHNICAL CENTRE.....	64
CAREA® School	65
PHOTO LIBRARY	66-69

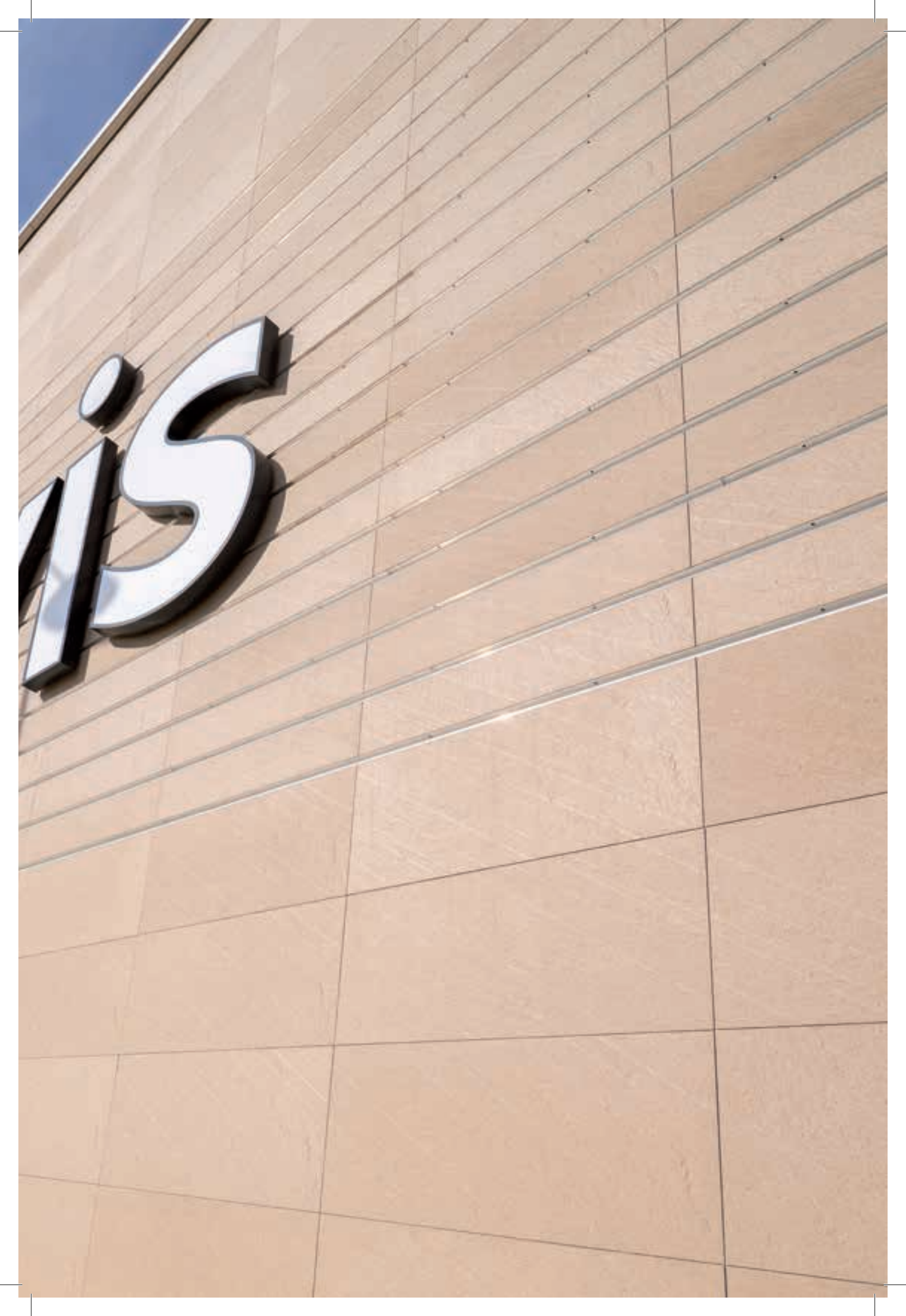


" WE HAVE MADE INNOVATION
A DAILY COMMITMENT"

John Lewis



nis





CAREA® GROUP

OUR VALUE SERVING OUR AMBITION

ONGOING INNOVATION

For over 30 years the CAREA® Group has been designing, manufacturing and distributing building products made from natural materials. As a major manufacturer in the cladding and external insulation markets, CAREA® has proved its know-how and expertise surrounding mineral composite materials through the development of two other activities: External paving and sanitary equipment for kitchens and bathrooms, including sinks, wet rooms, shower cabins and shower bases.

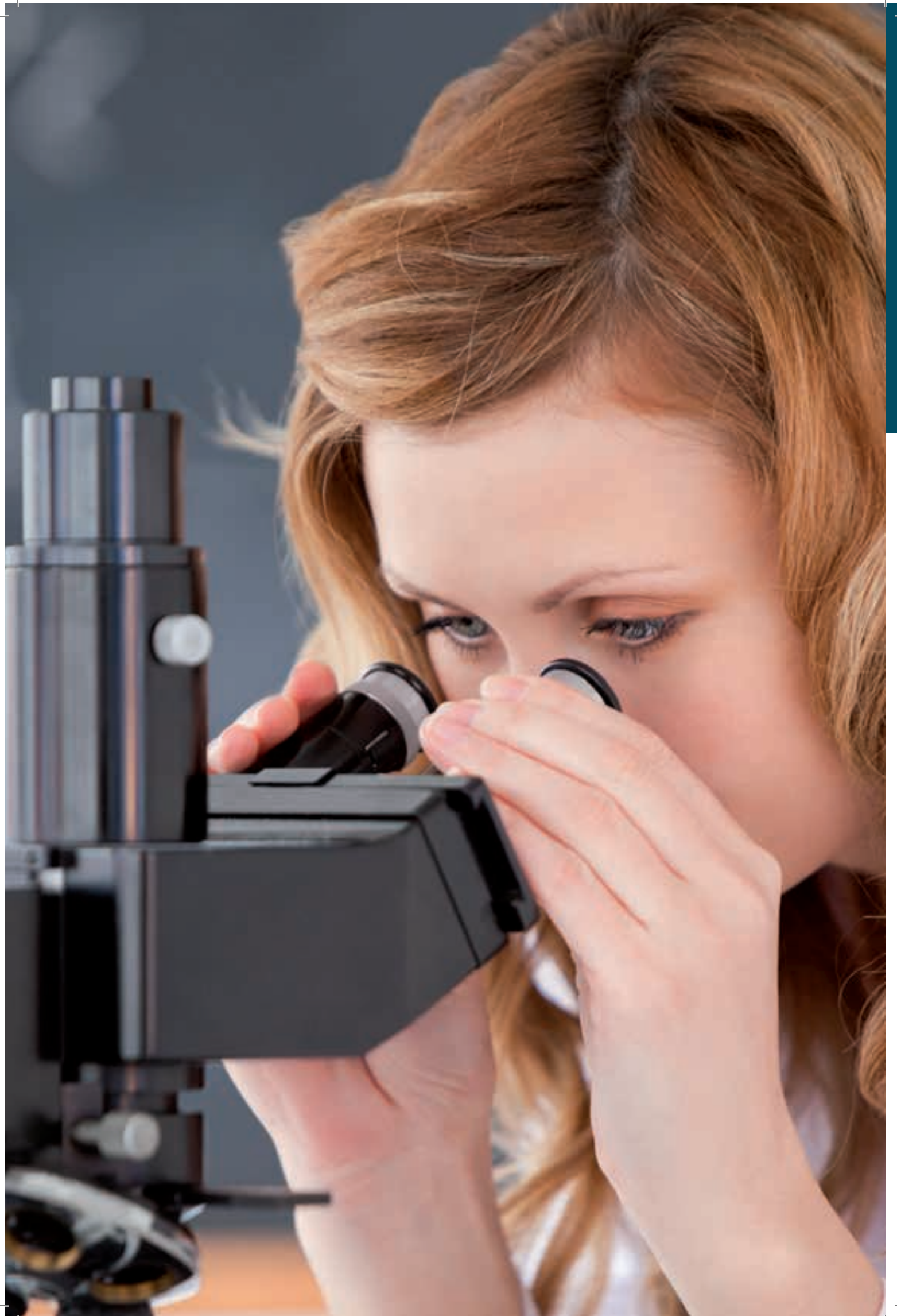
OUR SKILLS

The CAREA® Group has over 300 employees and at the European level has three sites in France dedicated to its three activities, a technical centre and a certified professional training centre, the "CAREA® SCHOOL", as well as a research laboratory which is an expression of our desire to be innovative and to continuously improve the technical and aesthetic qualities of these materials.

RESPECT THE ENVIRONMENT

CAREA® believes certain values are highly important. CAREA® has always believed it is important to prioritise eco-friendliness. In order to evaluate the environmental impact of its materials, CAREA® has created environmental and health declarations for all its products. (FDES compliant with the standard nf p01 010), the equivalent of BREEAM.

- 3 factories in France
- 3 activities: Cladding, Sanitary products, external paving
- 1 technical department
- 1 training School CAREA SCHOOL
- 1 R&D department



CAREA®

MATERIALS

- **Exclusive materials developed by CAREA® Group.**
- A total supply service:
From conception to manufacturing, your ideas becoming reality.
- A continuous care for innovation and development maintains CAREA® at the forefront
- CAREA® masters 3 types of facing:
Cladding (Rainscreen), Panelling and Surfacing.
- A skilful and reactive business team is always available in technical centre.
- A training centre "CAREA® SCHOOL" opened to professionals who want to improve their skills in cladding systems.
- An eco-friendly behaviour: CAREA® products are subject to an FDES (Environmental and Health Declaration) equivalent to BREEAM.

OUR STRENGTHS

- Secret fixing
- Non-porous products (unaffected by graffiti)
- Resistance to external and meteorological aggressions
- Exclusive materials developed by CAREA® Group.

ALL PRODUCTS DEVELOPED,
MANUFACTURED AND SOLD BY CAREA®
COME WITH A CSTB / BBA / ITB TECHNICAL
APPROVALS AND A GUARANTEE.

ECO-FRIENDLY

The cladding, panelling and surfacing solutions developed for over 35 years by CAREA®, fully meet the requirements of the latest thermal regulations and offers unrivalled architectural possibilities.

CAREA®
CONFIRMS
ITS LEADING
POSITION IN THE
MARKET FOR
EXTERNAL THERMAL
INSULATION.

Years of R&D have enabled CAREA® to design and manufacture products to meet the market and environmental requirements.

CAREA® CARRIED OUT A STATUS REPORT ON THE IMPACT OF ITS PRODUCTS ON THE ENVIRONMENT COMPLETING THE

FDES (SANITARY AND ENVIRONMENTAL DECLARATION STANDARDS) EQUIVALENT OF BREEAM AND CONFIRMING ITS

ENVIRONMENTALLY FRIENDLY BEHAVIOUR.

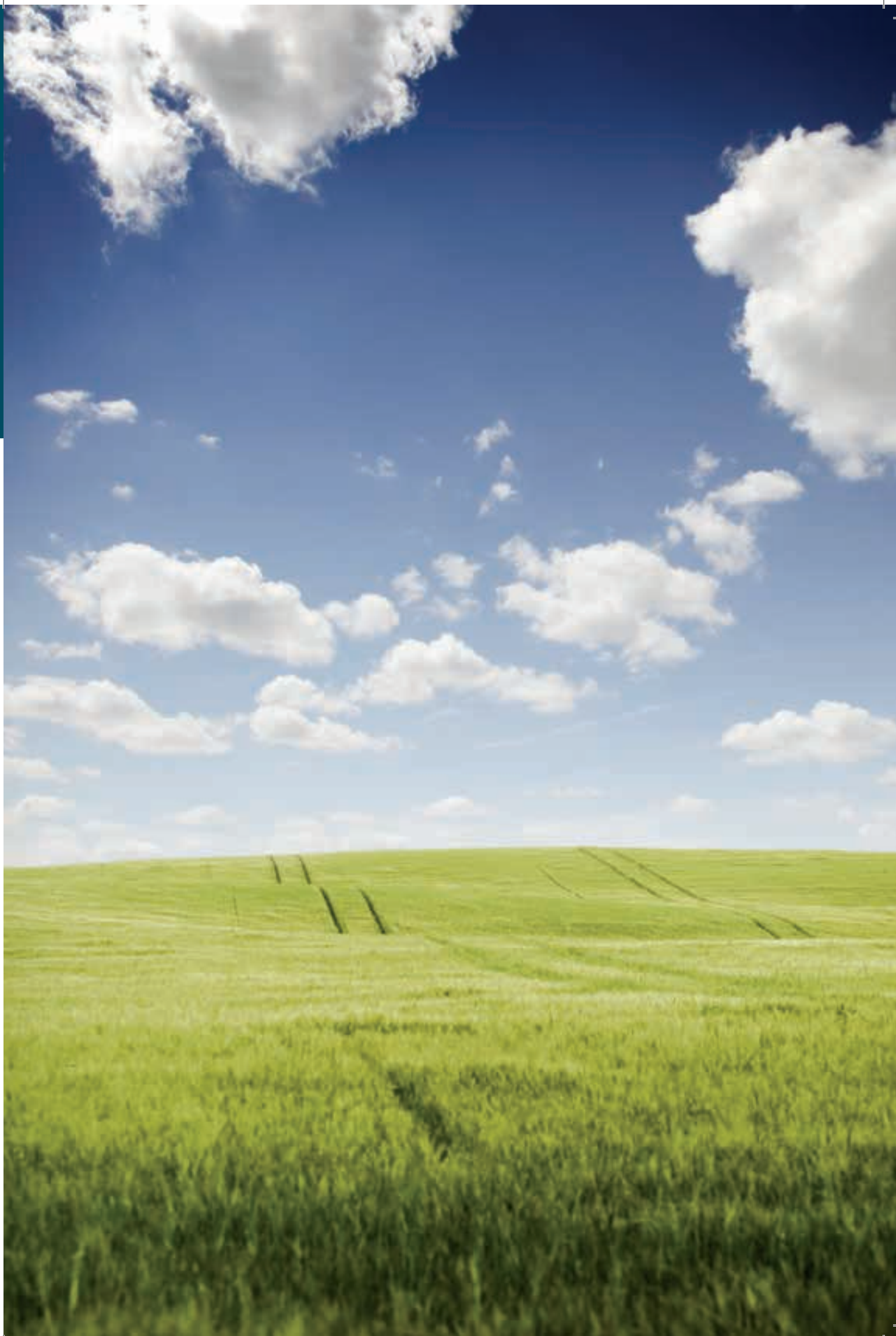
- USE OF NATURAL RESOURCES
- LOW ENVIRONMENTAL IMPACT DURING MANUFACTURE AND INSTALLATION
- LOW WASTAGE ON SITE

STANDARDS WE ARE COMMITTED TO



ÉCO - CITOYEN
FDES







CAREA® GROUP: UNIQUE EXPERTISE, MULTIPLE ACTIVITIES

INDUSTRIAL KNOW-HOW AND UNIQUE EXPERTISE



Thanks to its industrial know-how and its unique experience of the composite mineral material, CAREA® Group currently proposes a complete range of solutions, based on three main activities: the Facade panel market for External Thermal Insulation, sanitary equipment for the kitchen and bathroom (sinks, washbasin stands, cabins and bath areas) and external paving.

CAREA® Facade

Our CAREA® facade range allows you to fully express your creativity through your walls, and meet all your requirements, both technical and aesthetic, while maintaining good value for money.

CAREA Facade panels are easy to install and adapt to all your projects - both new build and refurbishment - and make it possible to limit energy loss. In fact, thanks to our commitment to sustainable development, we have developed innovating external thermal insulation solutions for interlocking panels, cladding and surfacing that meet the requirements of the new heat regulations.

CAREA® Sanitary

Sinks, sink + unit concepts, washbasin stands, washbasin stands + units, shower cabins and bath areas: our kitchen and bathroom solutions are a source of inspiration for all your interior design projects. **A choice of textures and colours, or sizes:** all combinations are possible, and you are certain to benefit from an exclusive material, recognised for its high technical qualities.

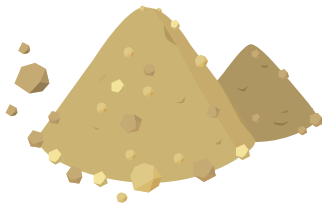
CAREA® Flooring

Our composite mineral materials models are very "design" and show a good balance between appearance and strength.

Unalterable and high performance, they withstand external aggression and shocks while offering a modern and trendy style.

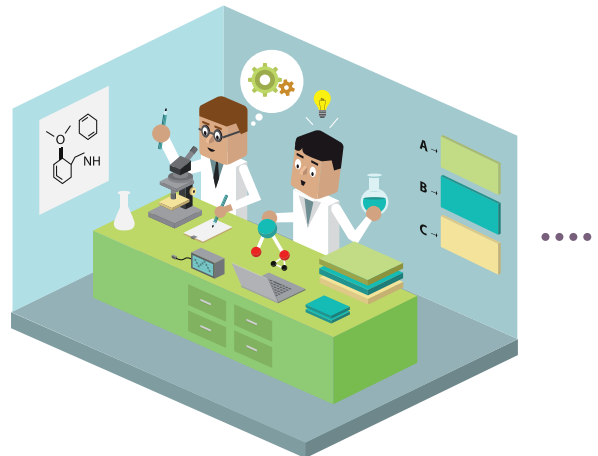
MONITORING ALL ITS ACTIVITIES

By privileging vertical integration from mineral selection to the sale of its products, CAREA® demonstrates its will to control all its activities. We have one objective: to guarantee our customers an exemplary level of quality.



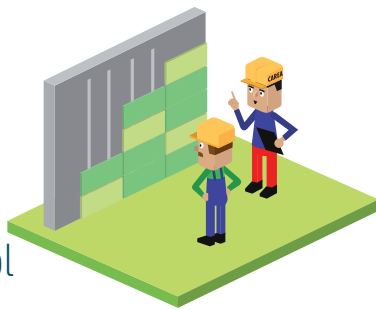
CAREA® MATERIAL

CAREA® is a composite material containing 90% mineral charge.



R&D Laboratory

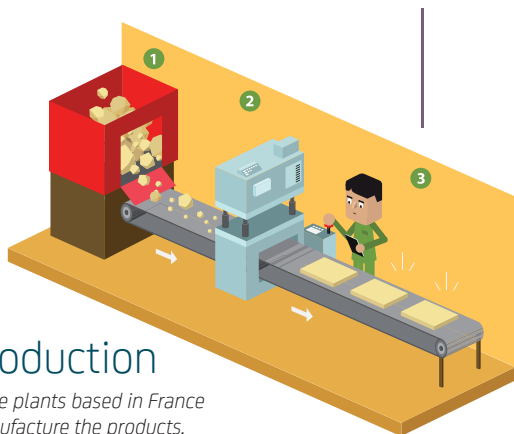
Our R&D laboratory continuously seeks to improve our CAREA® product quality, using new, and ever more innovating mixes. Our aim: to achieve a product that is more technical, more design, and more efficient.



CAREA® School

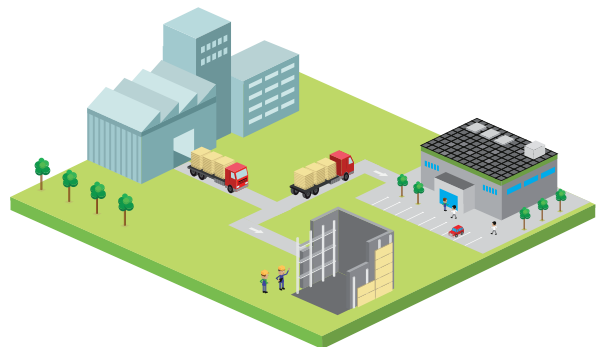
APPROVED TRAINING CENTRE

In order to obtain the perfect installation everytime, we created carea® school. our dedicated technical team trains you in every stage of fitting our products to achieve perfection for each project



Production

Three plants based in France manufacture the products.



Marketing

Thanks to our integrated sales force, our products are recommended to a wide audience, project owners, contractors and fixers.



CAREA® Technical centre

To answer your technical enquires, carea has created the technical centre and design department





CAREA®
FACADE

CAREA® MEETS THESE NEW
REQUIREMENTS BY PROVIDING
OPTIMUM THERMAL PERFORMANCES

EXTERNAL THERMAL INSULATION (E.T.I.)

EXTERNAL THERMAL INSULATION, KNOWN AS E.T.I., IS A TECHNIQUE TO TREAT FACADES DESIGNED TO SIGNIFICANTLY INCREASE THE THERMAL PERFORMANCES OF THE WALL.

IT ALSO BRINGS SIGNIFICANT ENERGY SAVINGS.

This technique fully contributes to the comfort of the inhabitants and also gives the building added value. E.T.I. consists in placing the insulating material outside the building (on the cold side), rather than on the inside (warm side).

External thermal insulation has the advantage of doing away with thermal bridges. E.T.I. processes apply to new and existing builds (private housing and apartment blocks, hospitals, offices, etc.)

The "Grenelle de l'Environnement" (French conference on ecology) highlighted this insulation technique by announcing a 15% reduction in energy consumption every 5 years, to reach 40% in 2020. Over 30 million buildings are concerned, including private housing and apartment blocks. The long term objective is to have energy saving, or even energy positive, housing thanks to the use of E.T.I. systems combined with renewable energy sources.

The benefits of an E.T.I. system

If external thermal insulation uses thermal notions and regulations, for example European Technical Approvals (E.T.A.), it is also based on compliance with installation best practises.

REDUCTION

Reduction of energy loss by **removing cold bridges**

PROTECTION

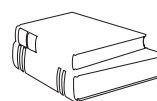
Protection of building envelope **from the weather**

COMFORT

Improvement of summer and winter comfort by increasing thermal inertia, while guaranteeing perfect continuity with other elements such as the roof, the joinery, the doors, etc.



35%
IS THE ENERGY LOSS RATE WHEN THE WALLS OF A DWELLING ARE INCORRECTLY INSULATED










RT 2012
FRENCH STANDARDS FOR NEW ENERGY CHALLENGES



7.3%
OF HOUSEHOLD'S CONSUMPTION EXPENSES IS FOR ENERGY OF WHICH 3,8% FOR HOME ENERGY

	SYSTEMS	PRODUCTS	FINISHES	SIZES L x H (in mm)	WEIGHT kg / m ²
CAREA® INTERLOCKING PANELS	CLADDING / INTERLOCKING PANELS / SURFACING	ALPHA	PIERRE DU SUD PIERRE DE LOIRE MATT BRICK SLATE	510 x 340 700 x 470	from 6.9 to 7
		AQUILA	MATT PIXEL DUNE CARVI	600 x 300 600 x 600 600 x 1200 1200 x 600 1350 x 600	from 8 to 12.5
CAREA® GROOVED PANELS	CLADDING / SURFACING	ARDAL S11	MATT GLOSSY SHELL RIVEN	14 sizes from 450 x 450 to 1200 x 600	26
		ACANTHA S14 S16	MATT GLOSSY RIVEN PAPYRUS RHODES URBA [NEW] MOON	[NEW] Maximum size 3000 x 900mm	from 35 to 43
		ARMADA S21	MATT GLOSSY RIVEN RHODES PAPYRUS	1800 x 450	50
			CAUCASE	600 x 500 and 400 x 500 (cannot be dissociated)	
			MATT	900 x 300	
SCHISTE	500 x 500 750 x 500 1000 x 500				
ARTEMA	MATT GLOSSY PAPYRUS RHODES URBA TAÏGA VEGETAL WOOD PRINT BESPOKE	Maximum size 2400 x 1000	from 38 to 50		

COLOURS	TECHNICAL APPROVALS	PAGE
66 COLOURS P. 34/37	 	28
	 	32
89 COLOURS P. 56/59	 	42
	 	46
	 	50
	 	54



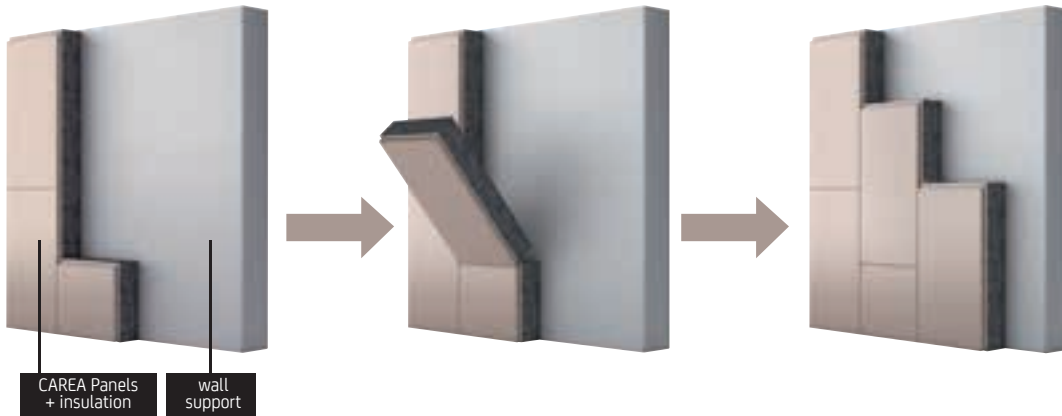




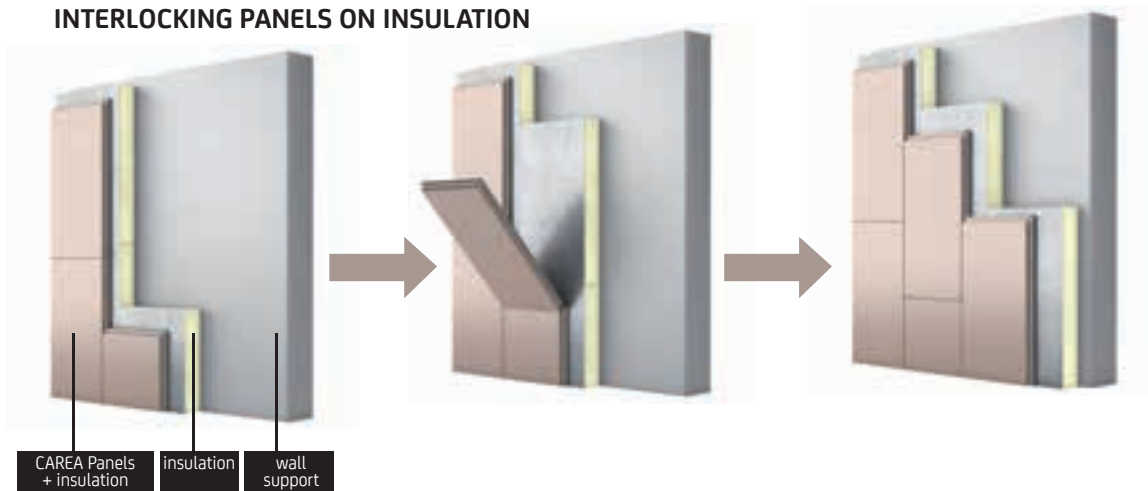
CAREA®
**INTERLOCKING
PANELS**

SYSTEMS

SURFACING



INTERLOCKING PANELS ON INSULATION



OTHER SYSTEM

CLADDING can be installed on wood frame and wood frame buildings)

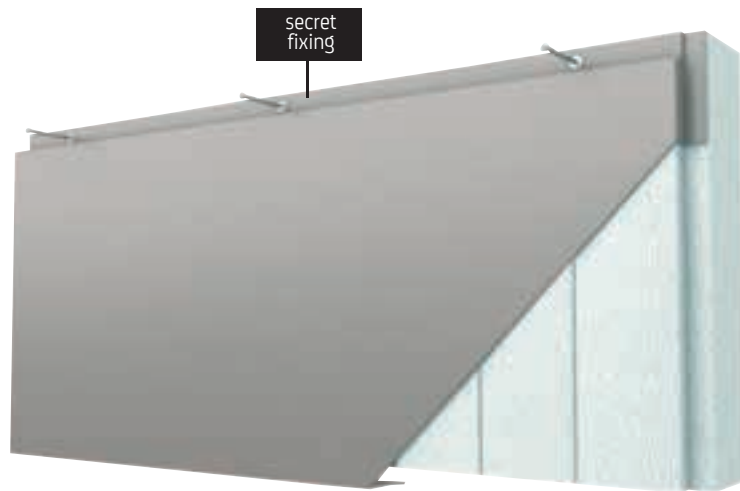


Flash the codes to access the surfacing demonstration videos.



HAVE A LOOK ON
CAREA® SCHOOL P. 63.

SURFACING IS ON EXTERNAL IN SULATION SYSTEM MADE UP OF CAREA®
INTERLOKING PANELS AND FACTORY INSTALLED INSULATION MATERIAL.



OUR STRENGTHS

- Fast and economic fixing
- Secret fixing
- Insulation thickness from 40 to 120 mm
 - Rock wool - PSE th38 - PSE th32
 - Polyurethane
- High resistance for exposed wall based
- Easy maintenance
- High durability
- Improves facade watertightness

DRESS & INSULATE YOUR EXISTING FACADE AT ONCE !



WREXHAM UNIVERSITY

Architect: AEW Architect

Main contractor: Midas construction

Fixer: Simco external facades

ALPHA

THE COST EFFECTIVE SOLUTION

SIZES
510 x 340mm
700 x 470mm

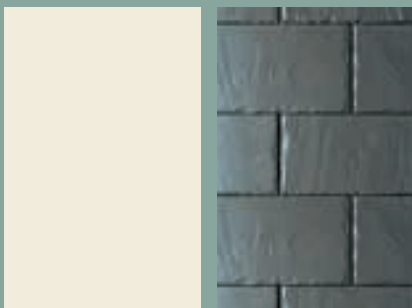
THICKNESS
3mm
5mm (Q4) Shock resistance

WEIGHT
7 to 12kg per m²



PIERRE DU SUD

PIERRE DE LOIRE

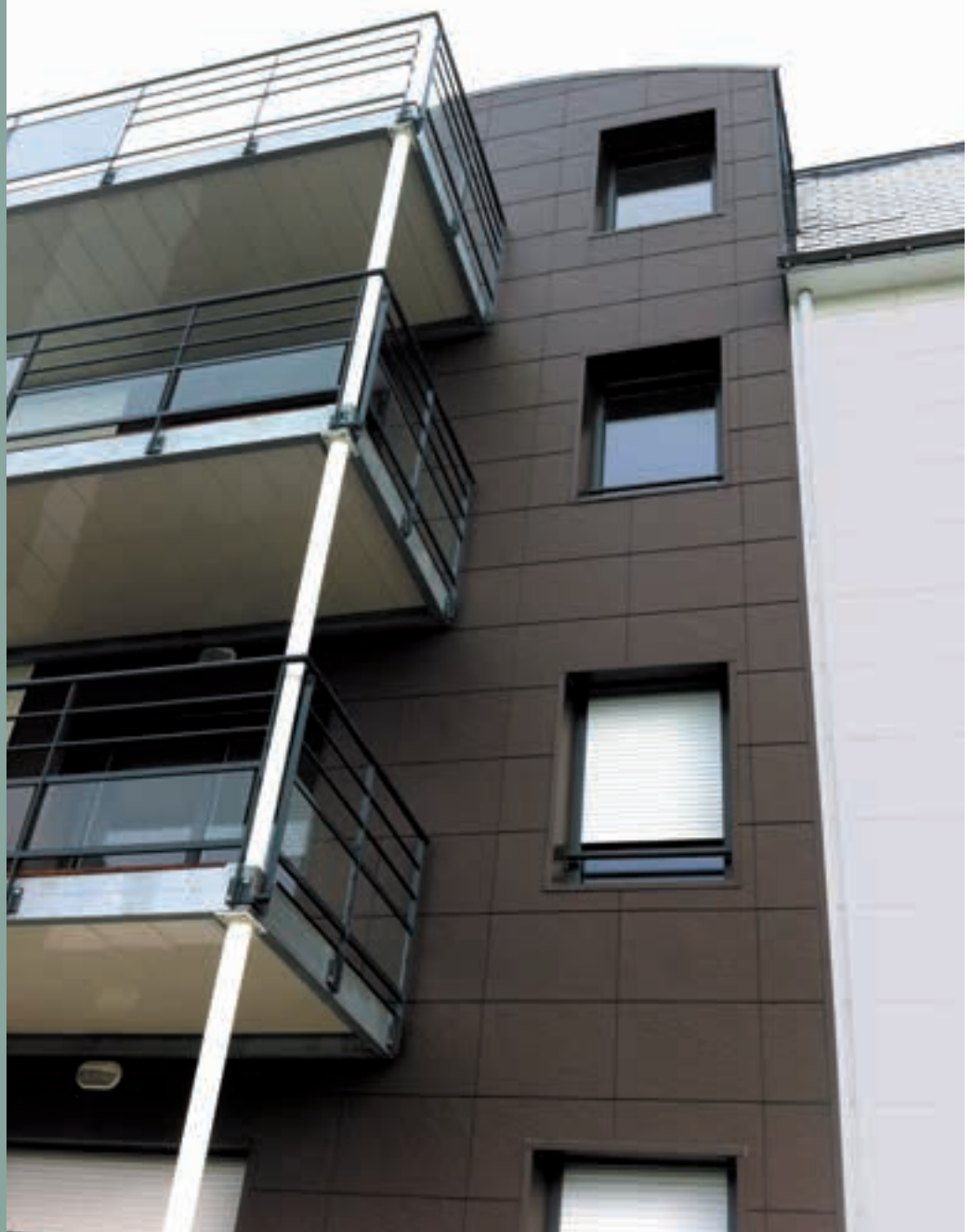


MATT

SLATE



BRICK



COLOURS ON P. 34/37

LE NAUTILUS - AURAY
Architect:
Cabinet Bruhec (Hennebont)
Main Contractor:
SA Aiguillon (Lorient)



TECHNICAL SPECIFICATIONS ALPHA

FINISHES	PANEL SIZES L x H (in mm)	THICKNESS		WEIGHT PER m ² in kg (without insulation)		JOINT SIZES l x d (in mm)	PANELS m ²	FIXTURES m ²
		STANDARD	REINFORCED Q4	STANDARD	RENFORCÉ Q4			
PIERRE DU SUD	510 x 340	3	5	7	12	6 x 4	5.76	11.5
	700 x 470						3	6
PIERRE DE LOIRE	510 x 340					6 x 4	5.76	11.5
	700 x 470						3	6
MATT	510 x 340					6 x 4	5.76	11.5
	700 x 470						3	6
SLATE	630 x 510			7.8	9.3	3 x 4	3	6
BRICK	650 x 520			9.3	14.7	8 x 12	3	6

INSULATION INTERLOCKING PANEL PERFORMANCE

Performance range (R in W.M²/K) given for information purposes

		1.2 >1.5	1.8 >2.05	2.4 >2.55	3.05 >3.1	3.5 >3.7	3.7 >4.35	4.5 >5.15	5.35 >6.0	6.2 >6.5	6.8 >7.05
PSE Th38 Rock wool	thickness (mm)	60	80	100	120	140	160	180			
PSE Th32	thickness (mm)	40	60	80	100	120	140	160	180		
PSE Th38 + PIR Th24	thickness (mm)					100	120	140	160	180	
PSE Th32 + PIR Th24	thickness (mm)						100	120	140	160	180

FINISHES FOR SPECIAL POINTS

		Metal profiles	Welded corners
ALPHA	ALL FINISHES	yes	yes

Metal profiles



welded corners



AQUILA

MAKER OF IDEAS

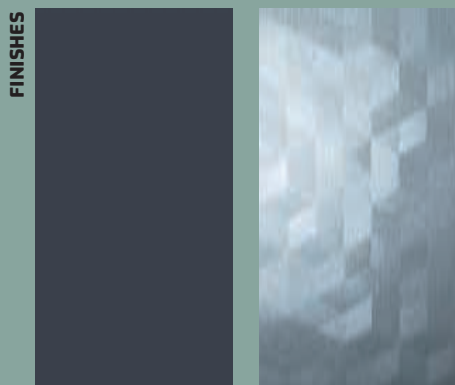
SIZES

- 1350 x 600mm (Landscape)
- 1200 x 600mm (Landscape)
- 600 x 1200mm (portrait)
- 600 x 600mm
- 600 x 300mm

THICKNESS

- 4mm
- 5mm (Q4)

WEIGHT 9 to 13kg/m²



MATT

PIXEL



DUNE

CARVI

COLOURS ON P. 34/37

AQUILA STRENGTHS

- Landscape and Portrait
- An infinite combination of sizes / colours / finishes



▼
CARRE DE SIAM BREST

Architect:

CABINET CAP ARTECTURE à Brests

Fixer:

LUCAS REHA LAVAL

sous avis techniques

ECTB

www.carea-facade.fr



TECHNICAL SPECIFICATIONS

AQUILA

FINISHES	PANEL SIZES L x H (in mm)	THICKNESS		WEIGHT PER m ² in kg (without insulation)		JOINT SIZES l x d (in mm)	PANELS m ²	FIXTURES m ²
		STANDARD	SOLID	STANDARD	SOLID			
CARVI	600 x 1200 1200 x 600 1350 x 600	4	5	9	13	6 x 15	1.38 1.24	4.15 to 6.9 3.7 to 6.15
		4		12.5	13		1.38 1.24	4.15 to 6.9 3.7 to 6.15
4	12.5	13		1.38 1.24	4.15 to 6.9 3.7 to 6.15			
MATT	600 x 600 600 x 300 600 x 1200 1200 x 600 1350 x 600	2.8		9	12.5		12.5	2.78 5.56
		4	1.38 1.24			4.15 to 6.9 3.7 to 6.15		

INSULATION INTERLOCKING PANEL PERFORMANCE

Performance range (R in W.M²/K) given for information purposes

		1.2 >1.5	1.8 >2.05	2.4 >2.55	3.05 >3.1	3.5 >3.7	3.7 >4.35	4.5 >5.15	5.35 >6.0	6.2 >6.5	6.8 >7.05
PSE Th38 Rock wool	thickness (mm)	60	80	100	120	140	160	180			
PSE Th32	thickness (mm)	40	60	80	100	120	140	160	180		
PSE Th38 + PIR Th24	thickness (mm)					100	120	140	160	180	
PSE Th32 + PIR Th24	thickness (mm)						100	120	140	160	180

FINISHES FOR SPECIAL POINTS

		Metal profiles	Welded corners
AQUILA	ALL FINISHES	yes	yes

Metal profiles



welded corners





**CAB GEFFLOT ET VITEL
RENNES**

ARCHITECT:
SEVRES LOIRE HABITAT
FIXER:
SONISOL



**BOULEVARD DE VARSOVIE
BÉTHUNE**

ARCHITECT:
CABINET DOUANES et BE PROJEX
FIXER:
CABRE



**LE CELAR
[RENNES]**

ARCHITECT:
Cabinet Vitel/Géflot (Rennes)
FIXER:
AXIMA (Bouguenais)



FINISH: DUNE
COLOUR: GALAPAGOS

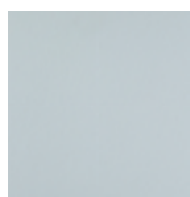
RES LES MADELEINES
[MORTAGNE SUR SÈVRES (85)]

ARCHITECT:
Cab Dugast à La Roche sur Yon
MAIN CONTRACTOR:
Vendée Habitat La Roche sur Yon.
FIXER:
Bergeret à La Roche sur Yon



COLOURS

GRIS - NOIR



Argent - 90



Gris nuage
CM9923



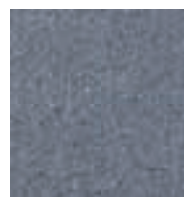
Safari - M6120



Souris - 299



Galapagos - 290



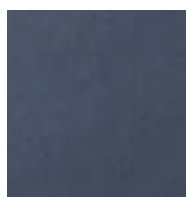
Fer - 264



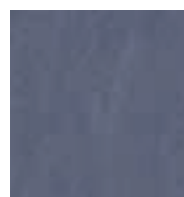
Gris vert - 7190



Gris quartz - 7193



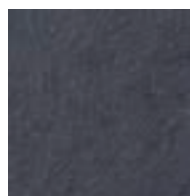
Gris anthracite
7161



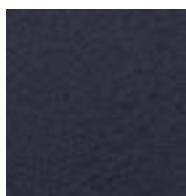
Gris ardoise
7151



Chiné
gris bleu - 9925



Noir opak - 9926



Noir - 60

Whilst every care and attention has been taken, slight colour variations may occur between physical samples and the colours reproduced in this brochure.

NEW COLOURS

ONYX



Cuivre - 9936



Or scintillant
9935



Gris rainbow
9938



Gris silver
9937

CANOPEE



Anthracite - C160



Cendré - C120



Acier - C190

IRIDESCENT



Blueberry - 9930



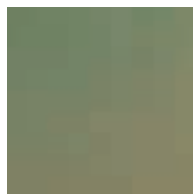
Océan - 9934



Lilas - 9932

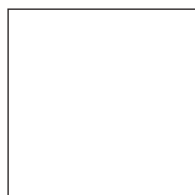


Sunset - 9931



Tropical forest - 9933

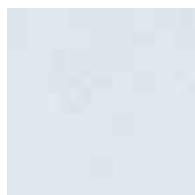
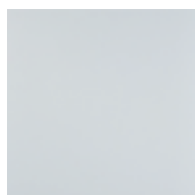
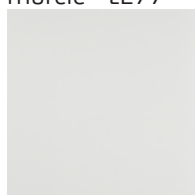
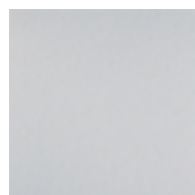
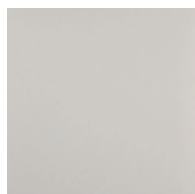
BLANC - BEIGE



Blanc 73



Blanc - M9130

Blanc
murcie - L277Chiné blanc
écume - 9922Chiné blanc
coquillage - 9940Chiné blanc
perle - 99Blanc
cendré - L9924

Craie 71



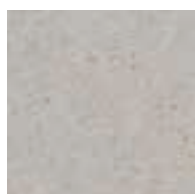
Sable 70



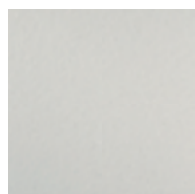
Ocre 30



Chiné grège - 164



Arène - 271

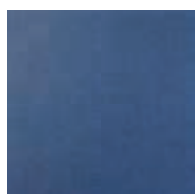
Pierre
naturelle - 9942Ivoire
chiné - CL 9939

Lin - L250



Sepia - 257

BLEU



Cobalt - L215



Turquin - M5017



Maya - L218



Azur - M51273



Electrique - M5015

Whilst every care and attention has been taken, slight colour variations may occur between physical samples and the colours reproduced in this brochure.

VERT



Chiné vert menthe - 9944



Bronze - 263



Thé vert - 6110



Chiné vert clair - 9941



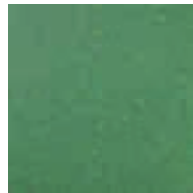
Chiné vert argile - 9943



Emeraude - L244



Prairie - M6018



Vert pomme - L249



Gazon - M6017



Vert pin - M6002

ROUGE - ORANGE - MARRON



Bordeaux - M3150



Rouge framboise - M3113



Rouge pompier - M3102



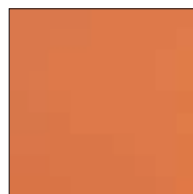
Aubergine - 40607



Terre - 55



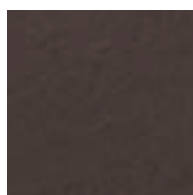
Terra cotta - 471



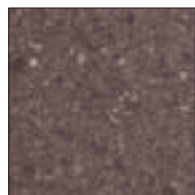
Safran - 158



Jaune zinc - 1018



Chocolat - 2838



Moka - 254





CAREA®
**GROOVED
PANELS**

GROOVED PANELS

CAREA® EXTERIOR WALL CLADDING IS AN EXTERNAL INSULATION SYSTEM INCLUDING CAREA® MINERAL COMPOSITE PANELS FIXED TO CAREA PRIMALU BACKING STRUCTURES, WHICH ARE FIXED DIRECTLY ON THE WALL.

ADDITIONAL INSULATION IS INSERTED BETWEEN THE MAIN WALL AND THE PANEL, THIS INSULATION IS VENTILATED BY AIR CIRCULATING BETWEEN THE MATERIAL AND THE SUBSTRATE SUPPORTING WALL.

CLADDING



OUR STRENGTHS

- Secret fixing
- A large choice of combination (finishes, sizes and colours)
- Under CTSB and BBA approvals
- Easy maintenance

GROOVED PANELS

CLADDING




Wood frame fixing possible



HAVE A LOOK ON
CAREA® SCHOOL P.63

ARDAL S11

SIZES  14 sizes
up to 450 x 450mm
1200 x 600mm

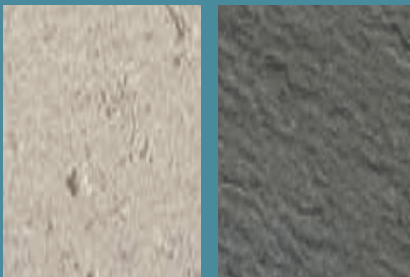
THICKNESS  mm S11

WEIGHT 26kg/m²



MATT

GLOSSY



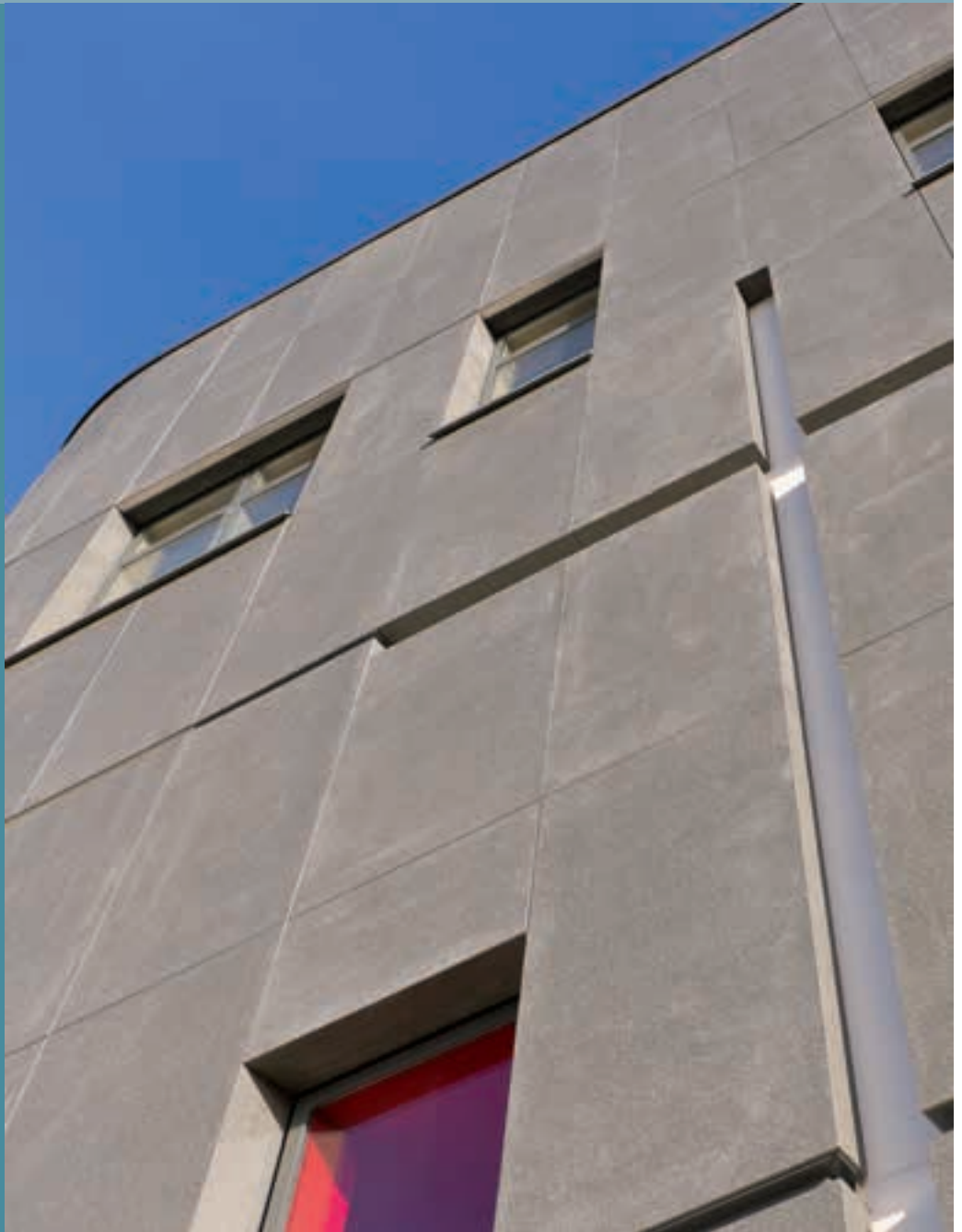
SHELL

RIVEN

COLOURS ON P. 56/57

ARDAL STRENGTHS

- 14 standard sizes
- Large choice of sizes, finishes and colours
- Easy maintenance



Archbishop McGrath Catholic High School

Architect:

HLM Architects

Main Contractor:

Leadbitter

Fixer:

Central Cladding Systems

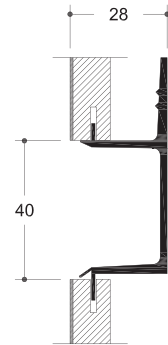
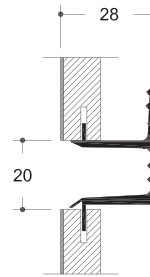
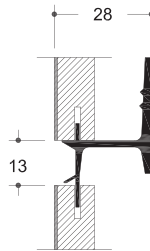
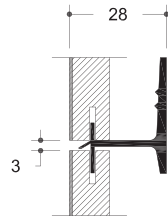
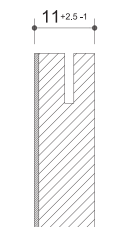


MADE IN FRANCE

FINISHES FOR SPECIAL POINTS

	FINISHES	SIZES	FM	AC	CB	CT
ARDAL	MATT GLOSSY	1200X600	yes	yes	yes	no
	RIVEN SHELL	UP TO 900X900 450X450	yes	yes	yes	yes

ABREVIATIONS	FM	METAL PROFILES
	AC	WELDED CORNERS
	CB	MITRED CORNERS
	CT	TREATED EDGES



Metal profiles



Welded corners



Mitred corners



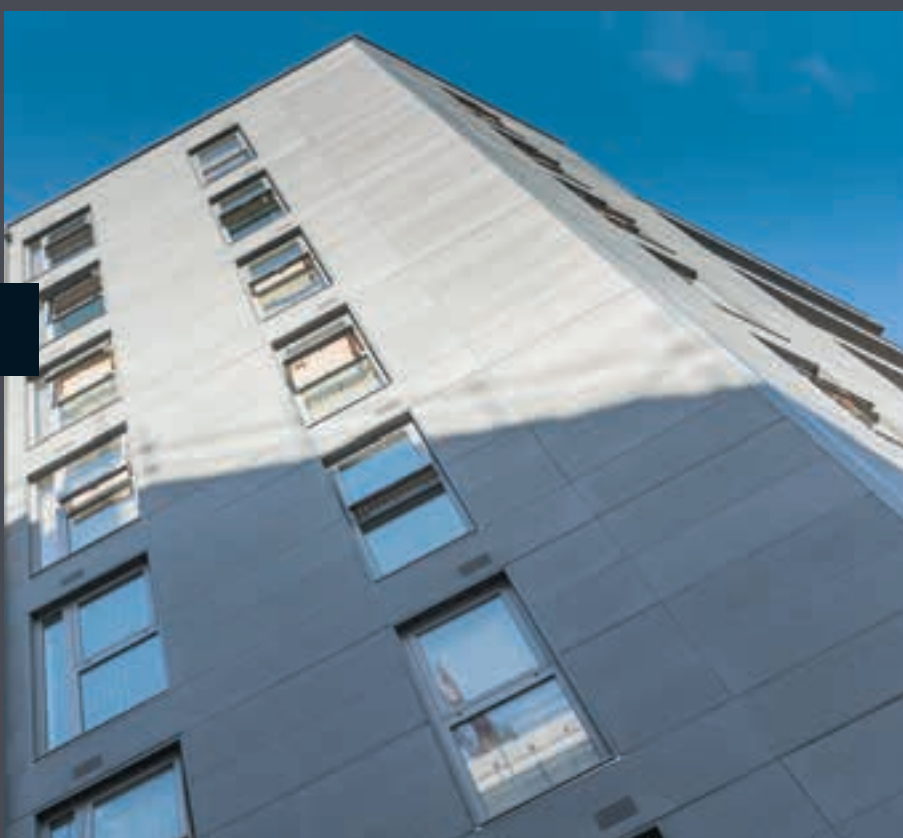
Treated edges





JOHN LEWIS
[YORK]

ARCHITECT:
DLA Architecture
MAIN CONTRACTOR:
Caddick construction
FIXER:
Coverstructure



BETHNAL GREEN RESIDENCE
[LONDON]

ARCHITECT:
Stock Wolstencroft (London)
FIXER:
OCL facades (London)



JOHN LEWIS RETAIL
[EXETER]

ARCHITECT:
Glenn Howell Architects

**Archbishop McGrath
Catholic High School**


ARCHITECT:
HLM Architects
MAIN CONTRACTOR:
Leadbitter
FIXER:
Central Cladding Systems



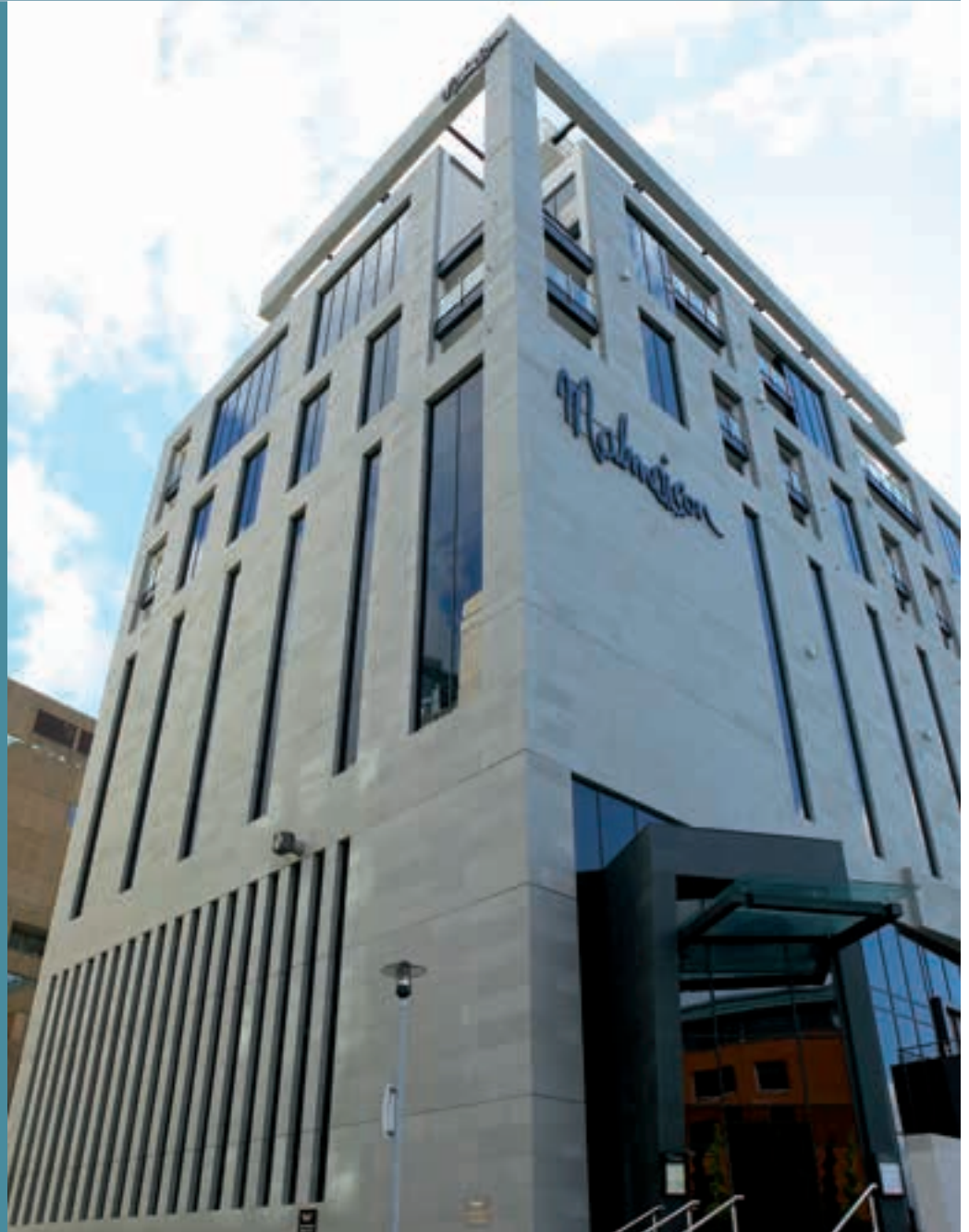
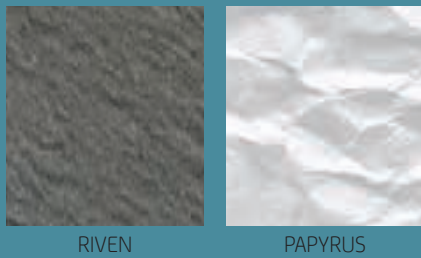
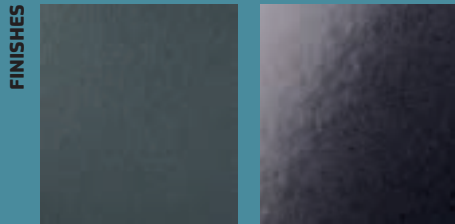
ACANTHA



[NEW]

SIZES  Maximum size
3000 x 900mm

THICKNESS  mm  WEIGHT S14:
36kg/m²
S16:
38 to 43kg/m²



ACANTHA STRENGTHS

- Bespoke finishes on request
- Many architectural possibilities

Malmaison Hotel (Liverpool)

Architect:

Leach Rhodes Walker

Main Contractor:

Morgan Sindall

Fixer:

Red architectural/Alufix

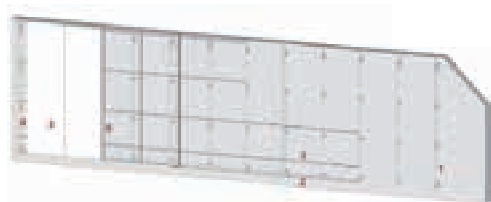
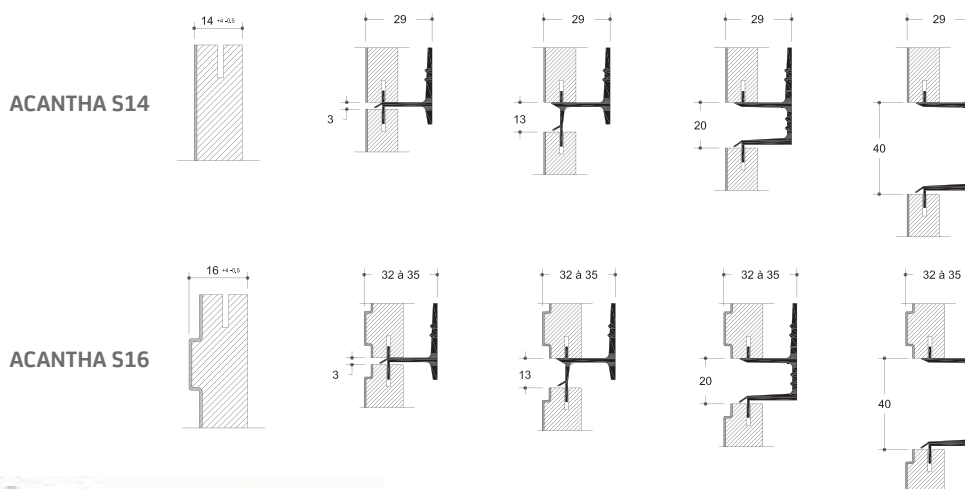
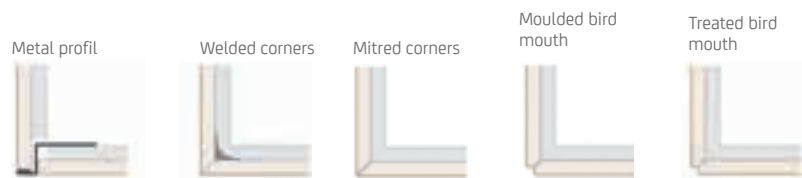


MADE IN FRANCE

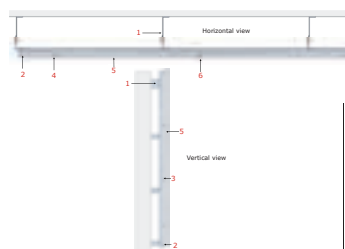
FINISHES FOR SPECIAL POINTS

	FINISHES	PANELS SIZES	FM	AC	CB	BOM	BOT
ACANTHA	MATT	up to 1800 x 450	yes	yes	yes	yes	yes
	GLOSS			yes	yes	yes	no
	RIVEN			yes	yes	no	yes
	RHODES			no	no	no	yes
	PAPYRUS			no	no	no	yes
	URBA			no	no	no	yes
	MOON			no	no	no	yes
TAIGA	no	no	no	yes			

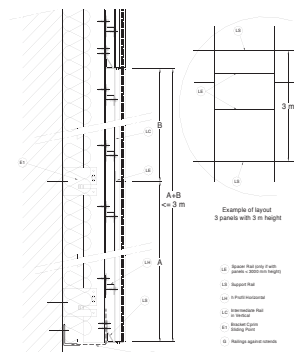
ABBREVIATIONS	FM	METAL PROFILES
	AC	WELDED CORNERS
	CB	MITRED CORNERS
	BOM	MOULDED BIRD MOUTH
	BOT	TREATED BIRD MOUTH



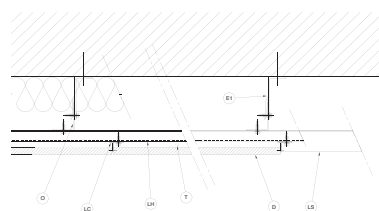
Isometric View



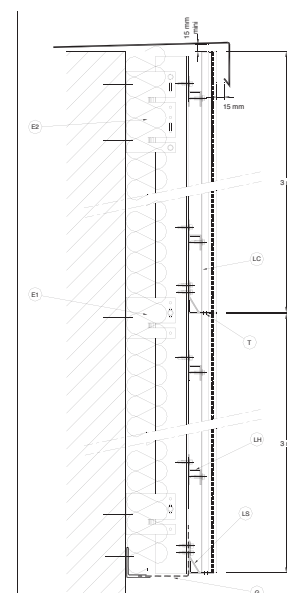
- 1 : Grooved Vertical Profile Cprim L65x50 with bracket Cprim (1 fixed and 3 sliding points)
- 2 : Support Rail
- 3 : h Profile
- 4 : Starter Rail
- 5 : Grooved Panel
- 6 : Intermediate Rail



VERTICAL CUT - detail on 3 m(h)
with < 3000 mm panels



HORIZONTAL CUT ON CLADDING



VERTICAL CUT - detail on 6 m(h)
with 3000 mm panels

- LS : Support Rail
- LH : h Profile in Horizontal
- LI : Intermediate Rail in Vertical
- LC : Bracket Cprim in Vertical
- E1 : Sliding Point
- E2 : Bracket Cprim Fixed Point
- G : Railing against rodents
- T : Drilling Hole for rain's water Ø 8 mm

- Ø : Ø 25x1,50 Frame with Profile Ø 6 x 10 Open
- : Bracket Cprim Fixed Point
- : Grooved Panel
- LS : Support Rail
- LH : h Profile Horizontal
- LI : Intermediate Rail Vertical
- : Drilling Hole Ø 8 mm on the support rail between 2 Profile L 65 x 50 vertical



TRESHAM COLLEGE
[NORTHAMPTONSHIRE]

ARCHITECT:
Bond Bryan
FIXER
BAM Construction

**LAW AND COURT BUILDING AT THE
UNIVERSITY OF HERTFORDSHIRE**

ARCHITECT:
RMJM
MAIN CONTRACTOR:
ISG PLC





THE GATEWAY

[LEEDS]

ARCHITECT:

Cary Jones

FIXER:

Baris



ARMADA S21

THICKNESS
mm S21

WEIGHT

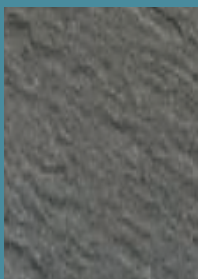
50kg/m²

SIZE



1800 x 450mm

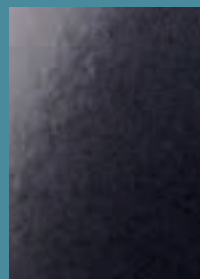
FINISHES



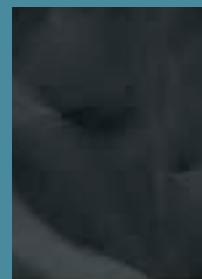
RIVEN



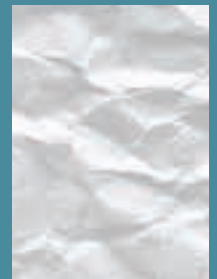
MATT



GLOSSY



RHODES



PAPYRUS

SIZE



900 x 300mm

FINISH



MATT



TORUS



LISTON

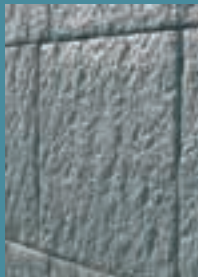
COLOURS ON P. 56/57

SIZES



400 x 500mm
600 x 500mm

FINISH



CAUCASE

SIZES



250 x 500mm
500 x 500mm
750 x 500mm
1000 x 500mm

FINISH



SCHISTE

ARMADA STRENGTHS

- Very high shock and aggression resistance (Q4)
- Anti-graffiti and scratch resistance
- Easy maintenance

sous avis techniques
CSTB
www.carea-facade.fr

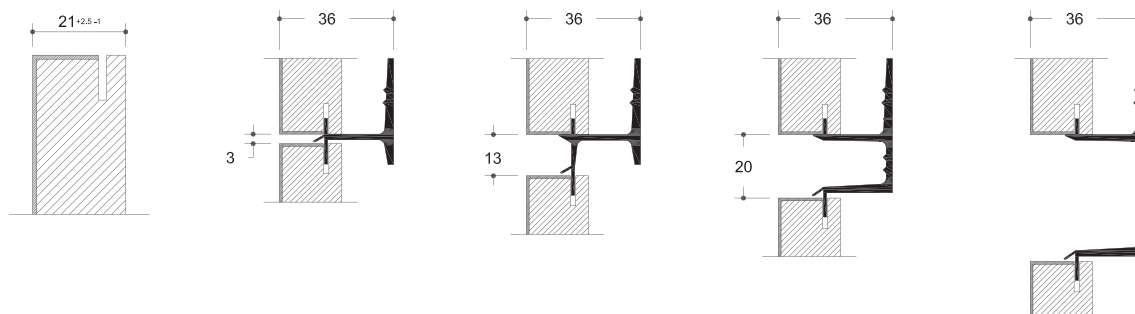


MADE IN FRANCE

FINISHES FOR SPECIAL AREAS

	FINISHES	PANEL SIZES L x h (in mm)	FM	AC	CB	BOM	BOT
ARMADA	MATT	UP TO 1800 x 450	yes	yes	yes	yes	yes
	GLOSSY			yes	yes	yes	no
	RIVEN			yes	yes	no	no
	RHODES			no	no	no	yes
	PAPYRUS			no	no	no	yes
	URBA			no	no	no	yes
	MOON			no	no	no	yes
	TAIGA			no	no	no	yes
	SCHISTE	250 x 250 500 x 500 750 x 500 1000 x 500	yes	yes	yes	yes	yes
	CAUCASE	400 x 500 600 x 500		no	no	yes	yes
MATT	900 X 300 LINEA LISTON TORUS	yes		yes	yes	yes	

ABBREVIATIONS	FM	METAL PROFILES
	AC	WELDED CORNERS
	CB	MITRED CORNERS
	BOM	MOULDED BIRD MOUTH
	BOT	TREATED BIRD MOUTH





RÉSIDENCE LABARROIS

[NCEUX LES MINES]

ARCHITECT:

SIA Habitat (Douai)

FIXER:

Genty (Saint Laurent Blangy)



RÉSIDENCE QUARTIER PAVÉ BLANC

[CLAMART]

ARCHITECT:

IDF architecture (Nogent-sur-Oise)

FIXER:

SA Aiguillon



RÉSIDENCE LES EXPLORATEURS

[FEIGNIES]

MAIN CONTRACTOR:


Promocil

FIXER:

SEPIC

ARTEMA

S16

SIZES  Max: 2400 x 1000mm

THICKNESS  mm **S16** **WEIGHT** 38 to 50kg/m²



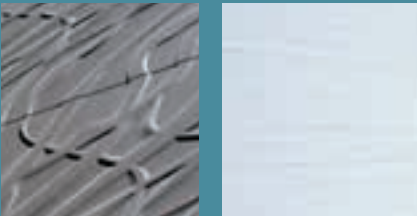
PAPYRUS

RHODES



URBA

TAÏGA



VEGETAL

WOOD PRINT

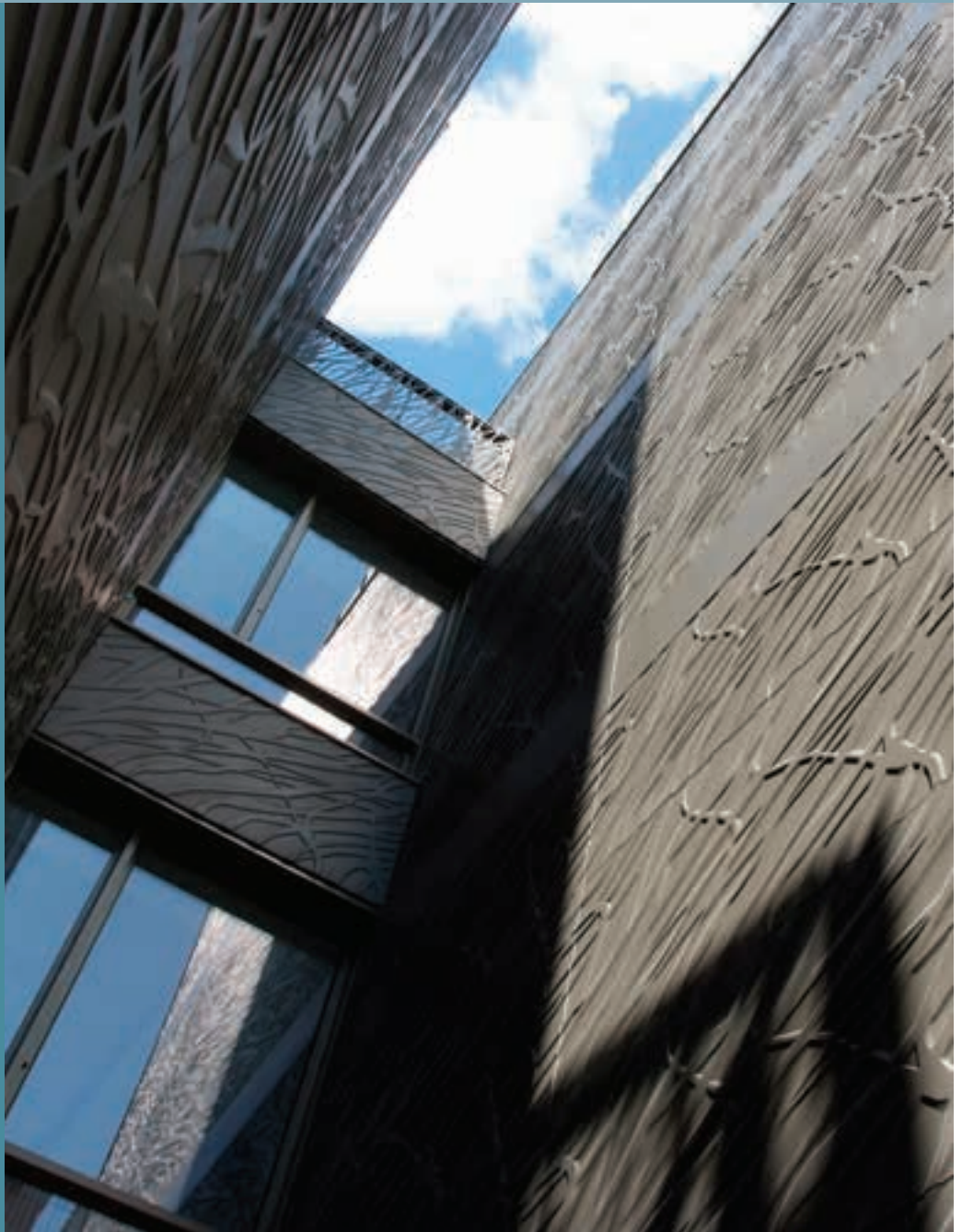


MOON

AVAILABLE IN MATT AND GLOSSY
COLOURS ON P. 56/59

ARTEMA STRENGTHS

- Bespoke finishes on request
- Curved panels



HOTEL ARTISANAL (PARIS 12)

Architect:

Cabinet Seura (Paris)

Main contractor:

Sageco (Paris)

Fixer:

SFB (Vaires-sur-Marne)



2/11-1439

ÉCO - CITOYEN

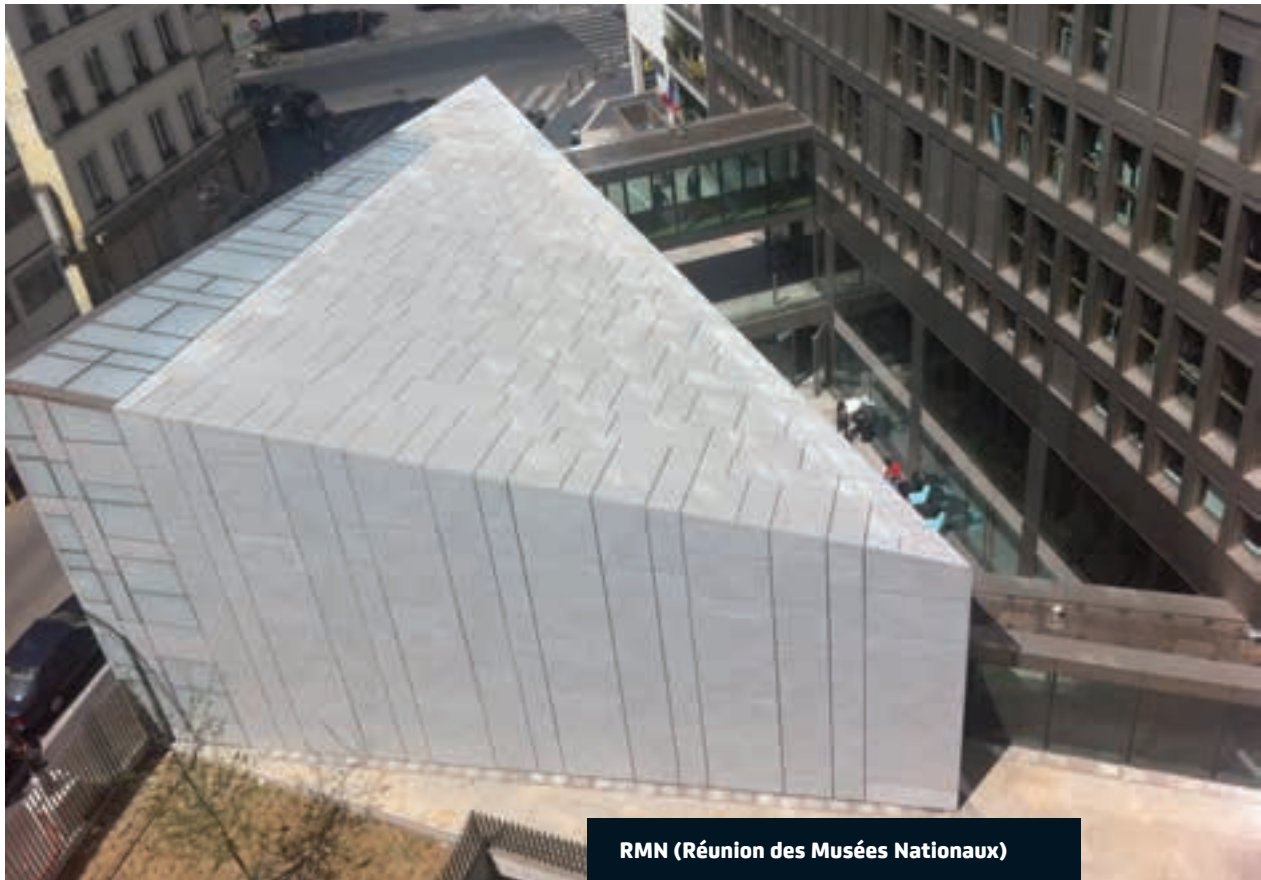
FDES

MADE IN FRANCE

FINISHES FOR SPECIAL POINTS

	FINISHES	PANEL SIZES L x h (in mm)	FM	AC	CB	BOM	BOT
ARTEMA	MATT	up to 2400 x 1000	yes	yes	yes	yes	yes
	GLOSSY			yes	yes	yes	no
	RIVEN			yes	yes	no	no
	RHODES			no	no	no	yes
	PAPYRUS			no	no	no	yes
	URBA			no	no	no	yes
	[NEW] MOON			no	no	no	yes
	TAIGA			no	no	no	yes
	WOOD FINISH			yes	yes	no	yes
	VEGETAL			no	no	no	yes

ABBREVIATIONS	FM	METAL PROFILES
	AC	WELDED CORNERS
	CB	MITRED CORNERS
	BOM	MOULDED BIRD MOUTH
	BOT	TREATED BIRD MOUTH



RMN (Réunion des Musées Nationaux)
[PARIS]

ARCHITECT:
Architectes 2/3/4 F ROUX et E PUZENAT (Paris 12)
FIXER:
ARBLADE TACOIGNIERES (MAP LAVAL)

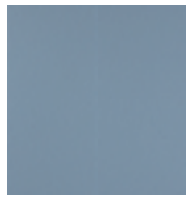
COLOURS

Whilst every care and attention has been taken, slight colour variations may occur between physical samples and the colours reproduced in this brochure.

GRIS - NOIR



Gris pale - 1390



Gris nuage
CM9923



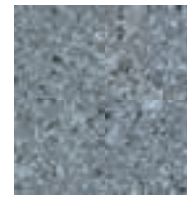
Galet - 2362



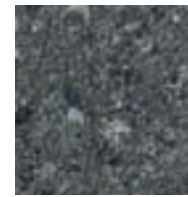
Boreal - 9024



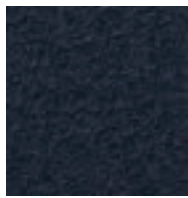
Roscoff - 9080



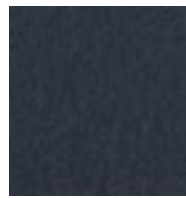
Eclipse - 9023



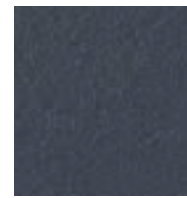
Basalte - 9081



Chiné
gris bleu - 9925



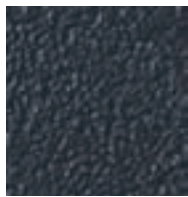
Gris anthracite
9919



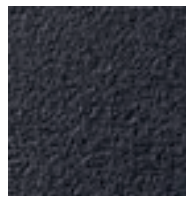
Gris ardoise
9947



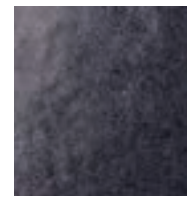
Gris taupe - 2310



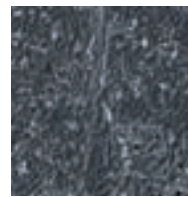
Noir- 384



Noir opak - 9926



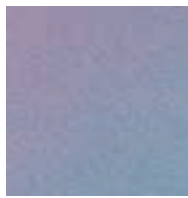
Noir ardoise
chiné - 9927



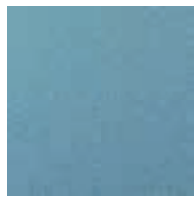
Noir
labrador - 9026

NEW COLOURS

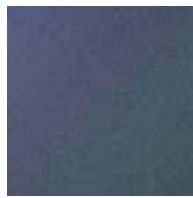
IRIDESCENT



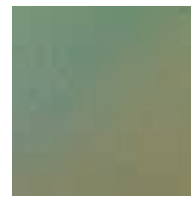
Lilas - 9932



Océan - 9934



Blueberry - 9930



Tropical forest - 9933



Sunset - 9931

CANOPEE



Argent martelé



Marron martelé



Noir martelé

ONYX



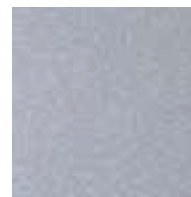
Cuivre - 9936



Or scintillant
9935



Gris rainbow
9938



Gris silver
9937

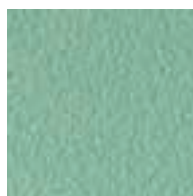
VERT



Aqua marine - 1622



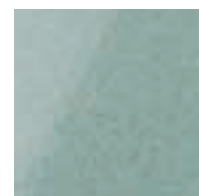
Vert d'eau - 1688



Vert pastel - 6400



Vert argile - 9943



Vert évasion chiné - 9945



Vert anis



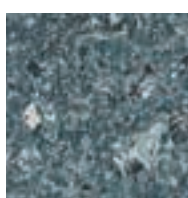
Vert jaune - 6416



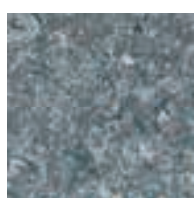
Vert pin - 6415



Lichen - 9035



Vert des Indes - 92028



Mer d'Irlande
9050



Vert menthe
9944



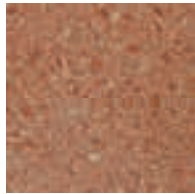
Vert clair
9941

Whilst every care and attention has been taken, slight colour variations may occur between physical samples and the colours reproduced in this brochure.

ORANGE - ROUGE - MARRON



Safran - 9910



Colorado - 9079



Saumon clair
490



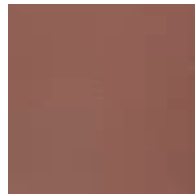
Terra cotta - 2171



Cuivre rouge
2656



Rouge feu - 9905



Ocre rouge - 179



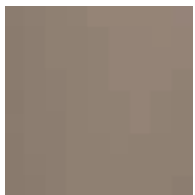
Canyon - 3226



Pierre pourpre
9061



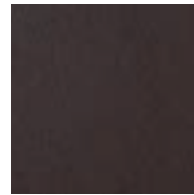
Bordeaux
763826



Sienne - 51



Poulain - 187



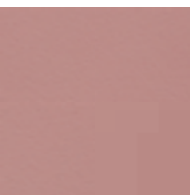
Chocolat - 2838



Terre d'ombre
3360

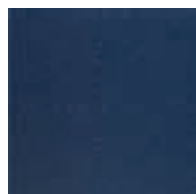


Granit rose - 9067



Rose thé - 1100

BLEU



Bleu céleste - 3200

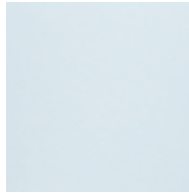


Mer d'Iroise - 9054



Lapis Lazuli - 9030

BLANC - BEIGE



Blanc banquise
0010



Blanc serac - 007



Blanc écume
9922



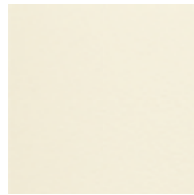
Blanc tempête
742



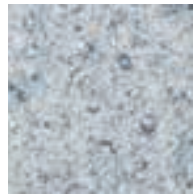
Blanc coquillage
9940



Blanc cendré
9924



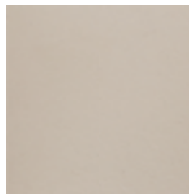
Blanc perle - 99



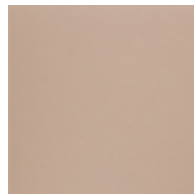
Blanc
ornemental 9072



Névé - 9034



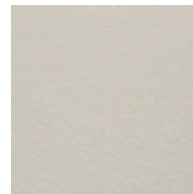
Champagne - 3044



Pêche - 1010



Grège - 164



Ivoire - 1011



Ambre - 1092



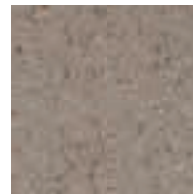
Copacabana
9084



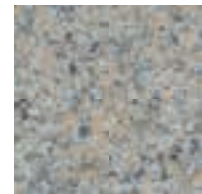
Hoggar - 9049



Ténéré - 9025



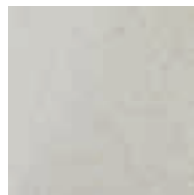
Joal - 9051



Jaune aurore
9056



Pierre naturelle
9942



Ivoire chiné - 9939



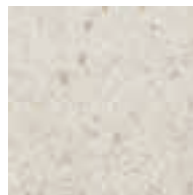
Opale - 1091



Iceberg - 9037



Tassili - 9022



Samoa - 9062



Opaline - 9029

HOB

WINDOW POD SYSTEM BY CAREA®

System for external thermal insulation dedicated to doors, windows and any other opening system components.
This system offers an aesthetic and thermal solution which is quick and easy to install

SIZES

Sills:
1400 x 650 x 50mm
HOB standard part:
720 x 585 x 60mm

FINISHES



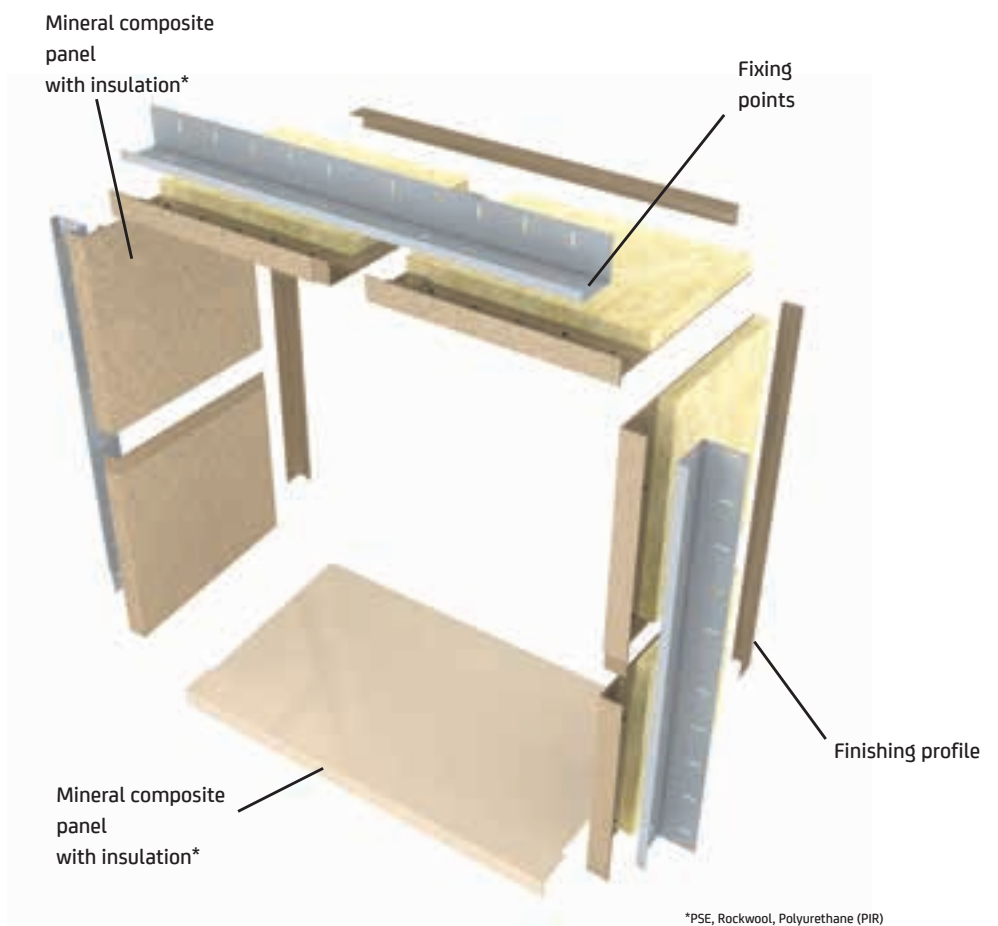
MATT



RIVEN



PAPYRUS



HOB's colours on page 34-37

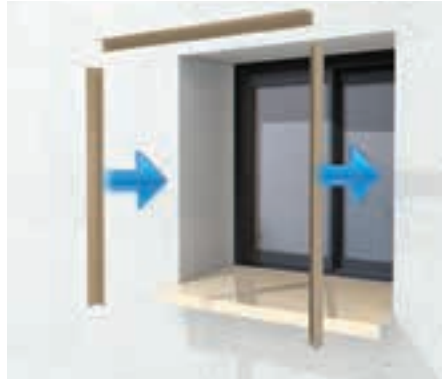
This system offers an AESTHETIC and THERMAL solution which is QUICK and EASY to fix..

STEPS

1 Install the sill



2 Install the special finishing profile



3 Install the reveals and head



4 Final adjustment



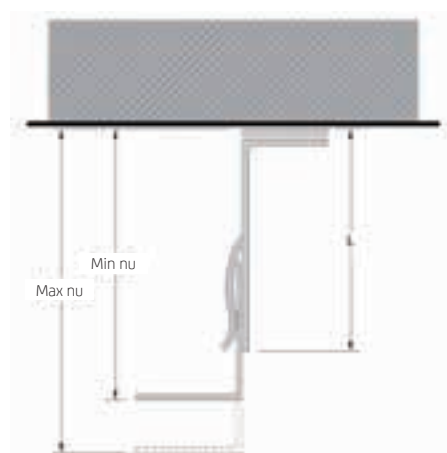
Flash the code to access to HOB video.



CAREA® PRIMALU

COMPLETE SYSTEM OF BACKING STRUCTURE

COMPLETE SYSTEM OF BACKING STRUCTURE FOR EXTERNAL THERMAL INSULATION, ASSOCIATING A PRIMARY COMPLEX CPRIM AND A SECONDARY COMPLEX CPRIM+ FOR THE FIXING OF CAREA® GROOVED PANELS.



LENGTH CPRIM	EDGE TO EDGE DISTANCE	
	MIN	MAX
100	125	150
120	145	170
160	185	210
200	225	250

CAREA® PRIMALU is **THE SOLUTION** to optimise the use of **CAREA®** systems.

- Designed for an aesthetic solution of special points
- Speed fixing to the helping hand on the Cprim market
- Vertical rails at up to 900mm centres
- Specially designed to give the best aesthetic solution

A single point of contact: CAREA®, for your whole facade.



CAREA® PRIMALU is composed of:

Cprim (primary frame)

- Bracket Cprim 160 (fix/butting)
- Bracket Cprim 80 (sliding fixing)
- Vertical profile Cprim L50x65

Cprim+ (secondary frame)

- Starter rail
- Intermediate rail 3mm joint
- Intermediate rail 13mm wide joint
- Intermediate rail 20mm deep joint
- Expansion Rail
- High rail
- End cap rails

CPRIM ELEMENTS

Bracket Cprim 160 (fixed point)
Aluminium 6060 T5 (or 6063 T5)

Thermal packer
to minimise coldbridge

Grooved Vertical profile Cprim
L50x65 marked for the fixing
of Cprim+
Thickness 2,5mm
Aluminium 6060T5 (or 6063 T5)

Brackets Cprim 80 (sliding point)
Aluminium 6060 T5 (or 6063 T5)

Starter rail

Intermediate rail 3mm joint

Intermediate rail 13mm wide joint

Intermediate rail 20mm wide joint

NEW
High rail

NEW
Expansion rail

Pin finishing cap

Nail finishing cap

CPRIM	DISTANCE BETWEEN FRONT OF WALL TO FRONT OF TILE	
	MIN	MAX
100 mm	125 mm	150 mm
120 mm	145 mm	170 mm
160 mm	185 mm	210 mm
200 mm	225 mm	250 mm

SYNOPSIS OF SPECIAL POINTS

NEW

Post butting using rigid clips

Framework fractioning using a top stop claw

Fractioned framework without aluminium flashing



CENTRE
TECHNIQUE
CAREA®

TO ANSWER YOUR
TECHNICAL ENQUIRES,
CAREA HAS CREATED
THE TECHNICAL
CENTRE AND DESIGN
DEPARTMENT

TECHNICAL CENTRE
CAREA®

- Study of the optimal way to use the CAREA product
- Research for improvement for the innovation of materials
- Technical survey
- Technical assistance when required

**R&D has helped CAREA to become
the market leader as a manufacturer
of grooved facade materials.**



CAREA®
SCHOOL

IN ORDER TO OBTAIN THE PERFECT INSTALLATION EVERYTIME, WE CREATED CAREA® SCHOOL. OUR DEDICATED TECHNICAL TEAM TRAINS YOU IN EVERY STAGE OF FITTING OUR PRODUCTS TO ACHIEVE PERFECTION FOR EACH PROJECT.

YOUR QUESTIONS

- What technical documents are available with regard to the fixing of facade facing?
- What is the manufacturing process?
- How do you optimise the delivery of the products on the site to the installation of the project?
- How are our products used (fitting of products, treatment of special points, repair and replacement of panels...)?
- What tools are required for correct fitting?

THE ANSWERS : THEORY AND MANUAL TRAINING

The theory lessons are dedicated to understanding the technical advice and the knowledge of "art work" ; They are illustrated with clear graphics and models. The technical training comprises of a hands on approach.

- 1/ Interlocking panels (Surfacing, panelling, cladding)**
- 2 / Grooved panels**
- 3 / Undercut anchored panels**

In addition to the correct tools, the fixing method is critical to a perfect installation.



SIR WILLIAM STAINER SCHOOL
[CREWE]

MAIN CONTRACTOR:
Willmott Dixon (Design & Build)
FIXER:
Roofdec



MAC GREGOR ROAD
[CHELSEA]

ARCHITECT :
Aldington craig and collinge
MAIN CONTRACTOR :
Clarendon
FIXER :
LCT



RUE ROMAIN ROLLAND
[NANTES]

ARCHITECT:
Cabinet AURA (Nantes)
MAIN CONTRACTOR:
ADI (Nantes)
FIXER:
Axina Nantes



INDIGO HOTEL
[LIVERPOOL]

ARCHITECT:
Falconer Chester Hall
MAIN CONTRACTOR:
Denizen
FIXER:
Eaga



GLASGOW COLLEGE

ARCHITECT:
RMJM
FIXER:
Stoneguard



SÈVRES HOSPITAL
[SÈVRES]

ARCHITECT:
Atelier 11 (Paris)
FIXER:
Marteau - Sprite





CURIAL
[PARIS]

ARCHITECT:
Arcane (Paris)
MAIN CONTRACTOR:
Paris Habitat (Paris)
FIXER:
Lucas Réha (Laval)
Brézillon (Roissy)



RONALD MC DONALD HOUSE
[BIRMINGHAM]

ARCHITECT:
AEW Architects
MAIN CONTRACTOR:
Bowmer et Kirkland
FIXER:
ECL Contracts

ALL OUR PRODUCTS,
TECHNICAL APPROVALS,
REFERENCES AND COLOURS
ON

www.carea-facade.fr
www.carea.uk.com

