

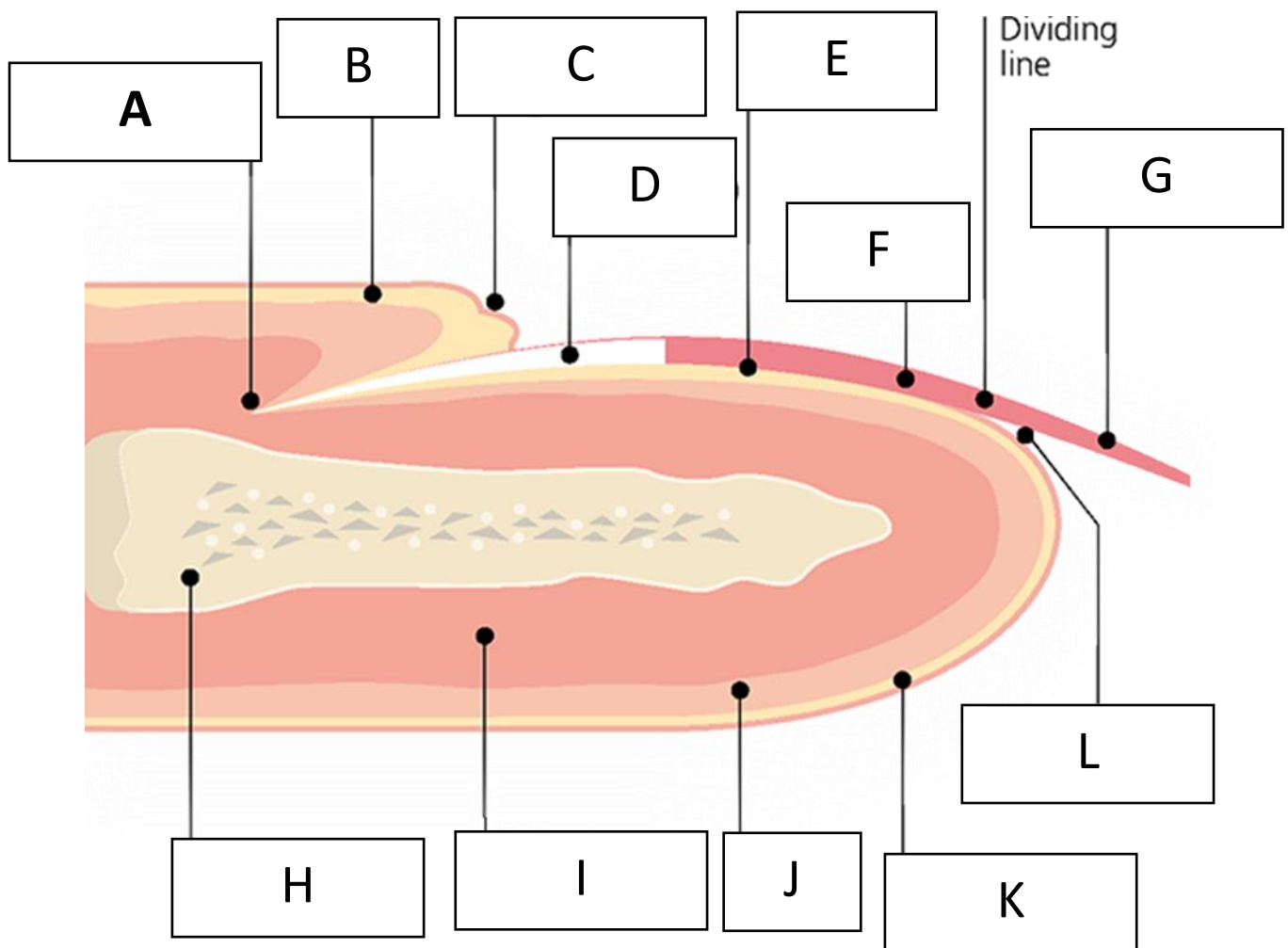
Level 2 Beauty Therapy

Multiple Choice Questions

The Nail

1. Which chemical is the nail made from?
 - a. Collagen
 - b. Elastin
 - c. Keratin

Look at the diagram below and answer the following questions.



2. What is letter A?
 - a. Mantle
 - b. Cuticle
 - c. Matrix

3. What is letter G?
 - a. Free edge
 - b. Nail plate
 - c. Nail bed

4. What is letter B?
 - a. Matrix
 - b. Mantle
 - c. Lunula

5. Which letter shows the lunula?
 - a. C
 - b. E
 - c. D

6. Which letter shows the nail bed?
 - a. F
 - b. E
 - c. B

7. Which letter shows the hyponychium?
 - a. L
 - b. C
 - c. K

8. What is the average growth per month of a fingernail?
 - a. 0.5 mm
 - b. 3 mm
 - c. 6 mm

9. In which part of the nail does mitosis occur?
 - a. Nail bed
 - b. Matrix
 - c. Free edge

10. Which part of the nail determines its thickness?
 - a. Nail bed
 - b. Cuticle
 - c. Matrix

11. Which part of the nail protects the nail bed?
 - a. Cuticle
 - b. Lunula
 - c. Free edge

12. Which part of the nail helps to direct the nail forwards?
 - a. Nail grooves
 - b. Matrix
 - c. Perionychium

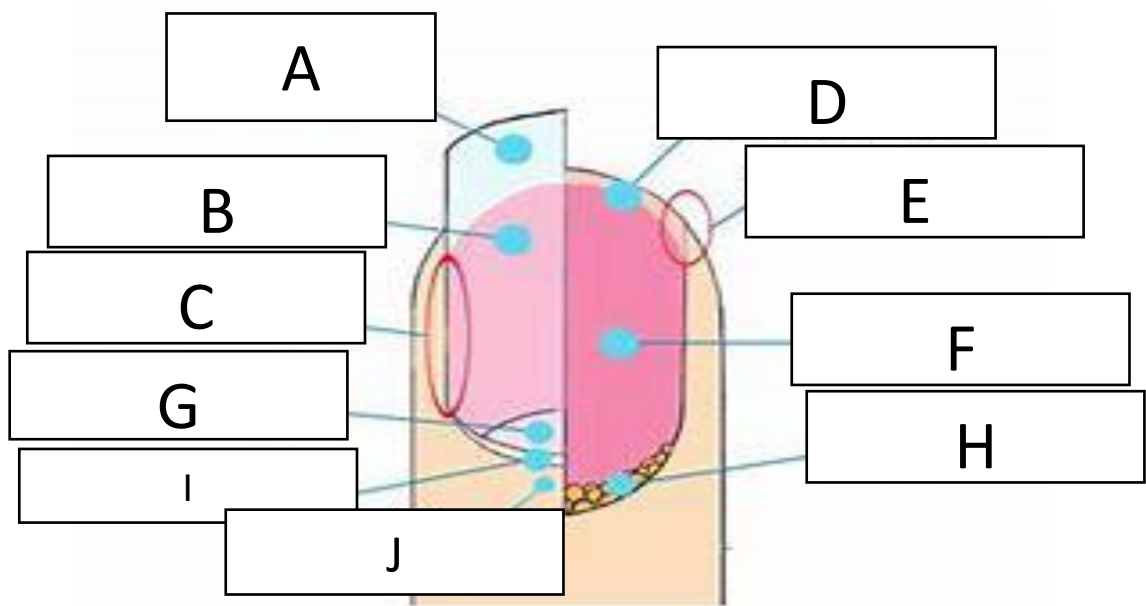
13. Which part of the nail can be described as skin that overlies the nail plate on its sides?
 - a. Hyponychium
 - b. Perionychium
 - c. Eponychium

14. Which part of the nail helps to guide it and keep it growing in a straight line?
 - a. Mantle
 - b. Nail grooves
 - c. Cuticle

15. At which month do nails begin to grow on the foetus?
 - a. First
 - b. Sixth
 - c. Fourth

16. Which part of the nail protects the nailbed from infection?
 - a. Eponychium
 - b. Hyponychium
 - c. Perionychium

Look at the diagram of the nail below and answer the following questions.



17. Which letter shows the free edge?

18. Which letter shows the hyponychium?

19. Which letter relates to the cuticle?

20. Which letter shows a part of the nail which means 'half-moon shaped'?

21. Which letter is the part of the nail where cell growth occurs?

22. Letter F shows which part of the nail?

23. What is E on the diagram?

24. What is J on the diagram?

25. Which letter shows the nail walls?